

Property

Fazenda São Gabriel Colheres

Baixa Grande do Ribeiro, Piauí		Cerrado	biome
CAR:	PI-2201150-02A77A8F99714DCBA2FB39B6E380F9B8	SIGEF/SNCI:	1260120069808
Area property (ha):	12,141	Coordinates property:	-45.09271, -8.50718

Cleared Area

Coordinates clearance:	-45.06171, -8.44202		
1,136 hectares	period clearance:	Jun to Sep 2022	
39 fires alerts			
Inside Forest Code's protected areas:	Yes	1127 ha inside declared Legal Reserve	
Type of vegetation:	Wooded Savanna	Priority for Biodiversity Conservation:	Extremely high

Conservation area(s) (overlapping or bordering): Closeby Estação Ecológica Uruçuí-Una

Indigenous Territories (overlapping or bordering): -

Imagery: limits of the property (blue) limits of the cleared area (red)

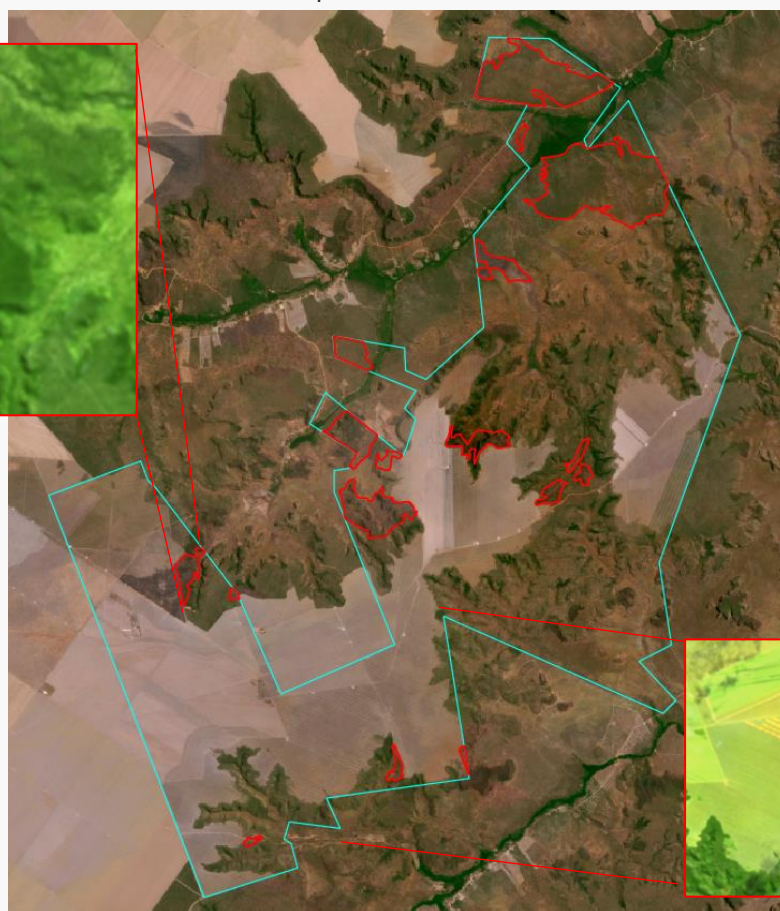
Fires

28th July 2022

September 2022



Source: European Union, contains modified 2022, processed with EO Browser Copernicus Sentinel data



Source: Imagery ©2022 Planet Labs Inc.

Fires

26th June 2022



Source: European Union, contains modified 2022, processed with EO Browser Copernicus Sentinel data

Environmental fines and embargoes			
Embargoes:	No	-	
Environmental fines:	No	-	-
Ownership and other linked properties			
Ownership:	InSolo		
Company group:	InSolo / Terrus		
Linked properties:	Linked properties totaling more than 120,000 ha		
Supply chain links			
Main Commodities	Soy		
Confirmed supply chain link, level of certainty, and soy trader/ beef processor	Yes	High	Bunge
Soy	Main exporters (municipality)	Risa (100%)	
	Warehouses (50 km radius)	20 warehouses, i.e.: 1 owned by Bunge	
	Supply chain links & details:	The property produced soy in 2021	
Beef	Main traders (municipality)	No data	
	Slaughterhouses (sourcing from the municipality)	No data	
	Supply chain links & details:	-	
Other supply chain links and details:	-		
General comments			
<p>Ricardo Faria bought the company InSolo in November 2021 becoming the 5th largest crop producer in Brazil with more than 120,000 hectares of crop cultivation, mainly soy (1). InSolo was the center of the scandal involving Harvard University's endowment fund. The company was linked to a series of social and environmental impact in Piauí, reported by Chain Reaction Research (2), Grain (3), and Rede (4). Fazenda Ipê is also involved in a case of land grabbing (5). InSolo had soy trading links to Bunge and Cargill (6).</p>			
<p>(1) https://exame.com/agro/apos-comprar-insolo-por-r-18-bi-ricardo-faria-e-maior-emergente-agro/ (2) https://chainreactionresearch.com/report/foreign-farmland-investors-in-brazil-linked-to-423000-hectares-of-deforestation/ (3) https://www.grain.org/en/article/6008-o-fiasco-agricola-bilionario-da-universidade-de-TIAA/Nuven/WestChester/Radar#sdfootnote30sym (4) https://www.social.org.br/files/pdf/PT_FINAL_PDF_TIAA/Nuven/WestChester/Radar.pdf (5) https://odr.chalmers.se/bitstream/20.500.12380/300087/1/E2019_106.pdf (6) https://www.aviculturaindustrial.com.br/imprensa/soja-no-mapito/20110411-085143-e131</p>			