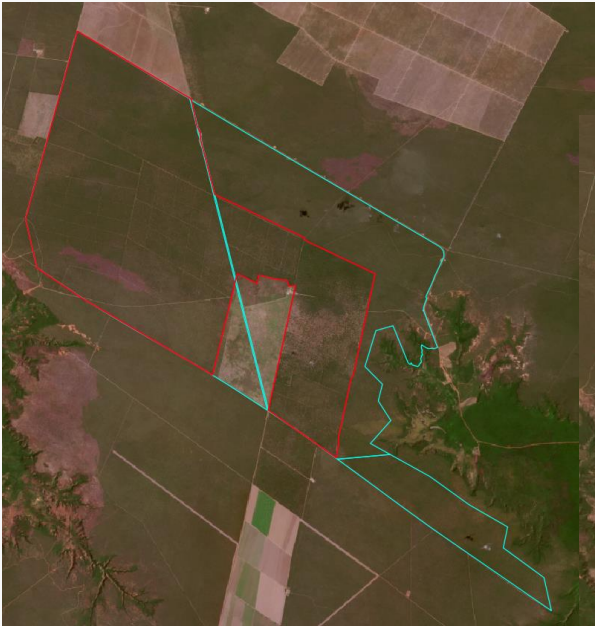


Property	
Fazenda Faveira	
Sebastião Leal, Piauí	Cerrado biome
CAR: PI-2210631-1D7A6338FF63468EAD61B550AEE5A1E1	SIGEF/SNCI: 9501144687703
Area property (ha): 11,820	Coordinates property: -8.20966, -44.30272

Cleared Area	
Coordinates clearance:	-8.20966, -44.30272
7,354 Hectares	period clearance: Nov 2022 to Jan 2023
367,528 tons of CO ₂	
13 fires alerts	
Inside Forest Code's protected areas: No	- -
Type of vegetation: Wooded Savanna	Priority for Biodiversity Conservation: No
Conservation area(s) (overlapping or bordering):	-
Indigenous Territories (overlapping or bordering):	-

Imagery: limits of the property (blue), limits of the cleared area (red)
November 2022



Source: Imagery ©2022 Planet Labs Inc.

January 2023



Source: Imagery ©2023 Planet Labs Inc.

Environmental fines and embargoes			
Embargoes:	No	-	
Environmental fines:	No	-	-
Ownership and other linked properties			
Ownership:	GBE Fazendas		
Company group:	GBE Fazendas (Sebastião Leal- PI) is registered as a real state agency by Augusto Barros de Macedo, Rodrigo Ruviano, and FWA Mundo Novo. Linked companies are: FWA Industria de Alimentos (poultry) (Cuiabá - MT), Campo Verde Alimentos (meat) (Campo Verde - MT), VT Logística e Transporte (Lucas do Rio Verde - MT), FWA Empreendimentos e Participações (Real State) (Cuiabá - MT), and FWA São Vicente Energia (Lucas do Rio Verde - MT)		
Linked properties:	In Sebastião Leal (PI): Fazenda Mundo Novo (11,000 ha)		
Supply chain links			
Main Commodities	Soy		
Confirmed supply chain link, level of certainty, and soy trader/ beef processor	No	Low	Bunge, ALZ Grãos
Soy	Main exporter groups (municipality)	Bunge (32%) and CHS (68%)	
	Warehouses (50 km radius)	18 warehouses including: 1 owned by Bunge and 1 by ALZ Grãos	
	Supply chain links & details:	-	
Beef	Main traders (municipality)	-	
	Slaughterhouses (sourcing from the municipality)	-	
	Supply chain links & details:	-	
Other supply chain links and details:	-		
General comments			
<p>In August 2021, GBE Fazendas requested authorization for the clearance of native vegetation in Sebastião Leal (PI) (1). We could not find detailed info about this authorization or if it is linked to Fazenda Faveira. GBE Fazendas was established in 2008 and is linked to a scandal involving Harvard University's endowment fund and a series of social and environmental impacts in Piauí, reported by Chain Reaction Research (2), Grain (3), and Rede Social de Justiça e Direitos Humanos (4). GBE is linked to Gordian Bioenergy, a private equity investment company managed by Diomes Christodoulou. In 2007, Christodoulou was linked to North American and European investors through a USD 150 million sugarcane plantation and ethanol refining project GBE planned to implement in Brazil. Together with Terracal, GBE purchased more than 30 properties in 5 states in Brazil especially linked to the Harvard endowment fund totaling 168,000 hectares. Between June 2008 and June 2015, Harvard transferred more than USD 246 million to GBE for farmland acquisition in Brazil. After the scandal, another company linked to Harvard, InSolo, was bought by Ricardo in November 2021, who, with this acquisition, established Terrus S.A. becoming Brazil's 5th largest grain producer in terms of planted area (5).</p>			
<p>(1) https://www.jusbrasil.com.br/diarios/1142473611/doepi-19-08-2021-pg-73 (2) https://chainreactionresearch.com/report/foreign-farmland-investors-in-brazil-linked-to-423000-hectares-of-deforestation/ (3) https://grain.org/en/article/6006-harvard-s-billion-dollar-farmland-fiasco (4) https://www.social.org.br/files/pdf/EN_FINAL_PDF_Harvard.pdf (5) https://exame.com/agro/apos-comprar-insolo-por-r-18-bi-ricardo-faria-e-maior-emergente-agro/</p>			