



## PT Hardaya Inti Plantations (HIP)

Location: Buol, Sulawesi Tengah

Biome: Sulawesi Lowland Rainforest  
(Indonesia)

Area concession (ha): 27,642

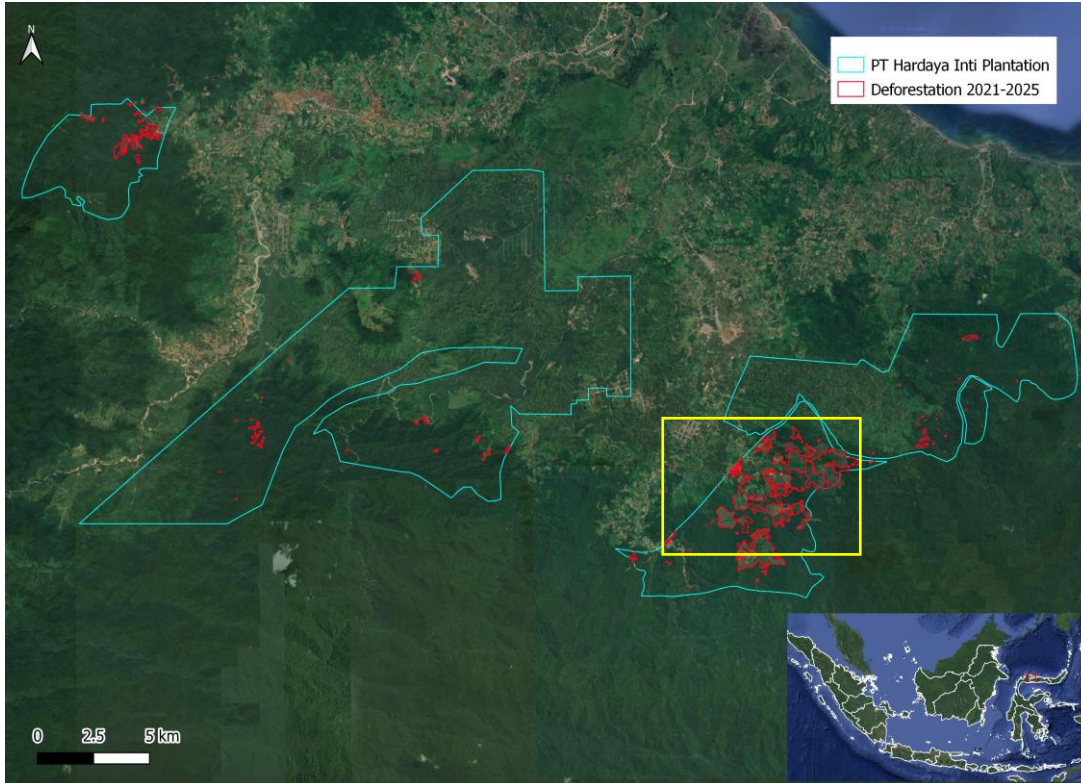
Coordinates: 0.90162, 121.47887

### Cleared Area

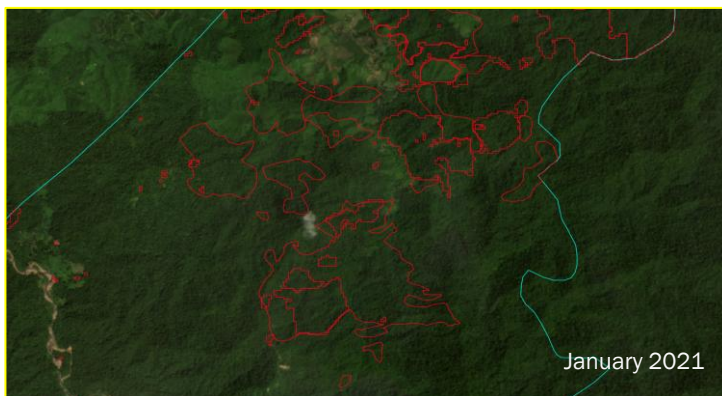
**1,193** hectares

Period clearance:  
January 2021 – September 2025

Type of vegetation: Forest  
on Mineral Soil



Imagery upper left: overview of PT Hardaya Inti Plantations (PT HIP) concessions in Buol district (blue polygons) and cleared area (red polygons). Middle and bottom left images: Before and after clearing images of primary forest PT HIP concessions between 2021 and 2025. Source: AidEnvironment, based on [Nusantara Atlas](#), Hansen et al., 2013. "High-Resolution Global Maps of 21st-Century Forest Cover Change." Imagery © 2025 Planet Labs PBC. According to [Nusantara Atlas](#), the PT HIP concessions now cover approximately 27,643 ha, including the southern area where the deforestation has been detected.



Imagery above: Satellite photo indicating that what SIGAP-KLHK classified (and released) as non-forest area is actually still standing forest (see also next page for more explanation). Source: Google Earth, July 2025.



## PT Hardaya Inti Plantations (HIP)

### Ownership & Business relationship

#### Owner:

Central Cipta  
Murdaya (CCM)

#### Mondelēz response:

The company did not respond after repeated requests in November 2025.

### Environmental fines, embargoes, and suspensions

#### Suspensions/fines

Yes, HIP was fined 1 billion rupiah in 2024 for not paying plasma scheme farmers

### Case description

There is continued primary forest loss in the PT Hardaya Inti Plantations (PT HIP) oil palm concession in Buol, Sulawesi. A combined Nusantara Atlas (1) and AidEnvironment analysis detected 1,193 hectares of forest loss in the plantation between 21 October 2024 and 16 October 2025, which includes undisturbed evergreen primary forests. The cleared area is classified as ‘forest formation’ according to MapBiomas (2) and the EU Forest Observatory map (3), and visual analysis by AidEnvironment confirms standing forest on the spot (see photo previous page). Nevertheless, the Indonesian government (SIGAP-KLHK) has classified part of the concession as unproductive convertible forest and subsequently released it into non-forest status (4). Therefore, PT HIP may develop it for oil palm plantation if they hold the Right to Cultivate (HGU). Under these circumstances, land clearing and plantation development are considered legally compliant with Indonesian regulation, despite the area being covered with forest vegetation and noncompliance under the EUDR.

PT HIP’s parent company is Central Cipta Murdaya (CCM), an Indonesian conglomerate active in agriculture, property, infrastructure, and manufacturing. Known for operating oil palm concessions—including PT HIP—CCM has faced scrutiny for environmental impacts and deforestation, especially in Sulawesi, through its subsidiary companies. In 2018, PT HIP came under public scrutiny after being granted a 9,964-hectare concession by KLHK only two months after the Presidential instruction on the palm oil moratorium was issued (5). Apart from forest loss, news articles point to several allegations of social impacts linked to PT HIP, including community clashes and substantiated claims that the company continually clears land inside regions officially designated as natural forest, exploiting the regulatory loophole that allows clearing within licensed concessions (6, 7, 8). Forum Asia amplifies voices from affected local groups, highlighting how Hardaya Inti Plantations’ forest destruction is allegedly inflicting ecological harm and food insecurity on subsistence communities; their June 2025 advocacy notes explicit violations of customary rights and ecosystem stewardship (8). PT HIP was fined by the state last year for failing to pay farmers under the plasma scheme (9).

The fresh fruit bunches harvested in the cleared PT HIP oil palm plantation are likely supplied to the nearby, approximate 1-hour drive to the PT HIP LEOK palm oil mill (coordinates: 1.026389, 121.360833). Despite other publicly available corporate grievance trackers from for instance Wilmar, Hershey, and Fuji Oil, that report to suspend or examine sourcing from PT HIP and its linked plantations and mills (10), Mondelēz continues to report sourcing from the Hardaya Inti Plantations LEOK mill through AAK and Bunge on its latest palm mill list (11). Keeping the controversial LEOK mill in a public palm oil mill list while Mondelēz may no longer source from them may reveal that the Mondelēz’ due diligence is incomplete and non-transparent, while making it difficult for watchdogs’ organisations to track sustainability progress and compliance publicly.

- (1) Nusantara Atlas, online: <https://nusantara-atlas.org/>, viewed in October 2025.
- (2) Mapbiomas Indonesia, online: <https://mapbiomas.nusantara.earth/>, viewed in October 2025
- (3) EU Observatory Forest map, online: <https://forest-observatory.ec.europa.eu/forest/gfc2020>, viewed in October 2025.
- (4) Kementerian Lingkungan Hidup dan Kehutanan (KLHK), online: <https://www.menlhk.go.id/>, viewed in October 2025.
- (5) Dari Inpres Moratorium Sawit Hingga Kebijakan Tata Kelola Industri Sawit Presiden Jokowi: Studi Kasus Penerbitan SK Pelepasan Kawasan Hutan PT Hardaya Inti Plantations di Buol, Sulawesi Tengah (2019), online: <https://jhli.icel.or.id/index.php/jhli/article/view/122>, viewed in Nov 2025.
- (6) Mongabay (2019), online: <https://news.mongabay.com/2019/02/indonesian-minister-blasted-over-palm-permit-for-graft-tainted-concession/>, viewed in October 2025.
- (7) Mongabay (2024), online: <https://news.mongabay.com/2024/06/indonesian-palm-oil-firm-clashes-with-villagers-it-allegedly-shortchanged>, viewed in October 2025.
- (8) Forum Asia (2025), online: <https://forum-asia.org/buol/>, viewed in October 2025.
- (9) Mongabay (2024), online: <https://news.mongabay.com/2024/07/palm-oil-company-fined-for-cheating-sulawesi-farmers-to-reap-their-due-rupiah>, viewed in October 2025.
- (10) See for instance Grievance Trackers of Wilmar (<https://www.wilmar-international.com/sustainability/grievance-procedure>),
- (11) Mondelēz palm oil mill list 2023 (updated 20 January 2025), online: <https://www.mondelezinternational.com/assets/Snacking-Made-Right/ESG-Topics/Palm-Oil/MDLZ-Palm-Oil-Mill-List.pdf>.