



## SOCOCCI (Société Coopérative de Café-Cacao Ivoirien)

**Location:** Gôh, Gagnoa; Gôh-Djiboua

**Biome:** Tropical & Subtropical  
Moist Broadleaf Forest (Côte d'Ivoire)

**Coordinates cooperative:** 6.12224; -5.9624

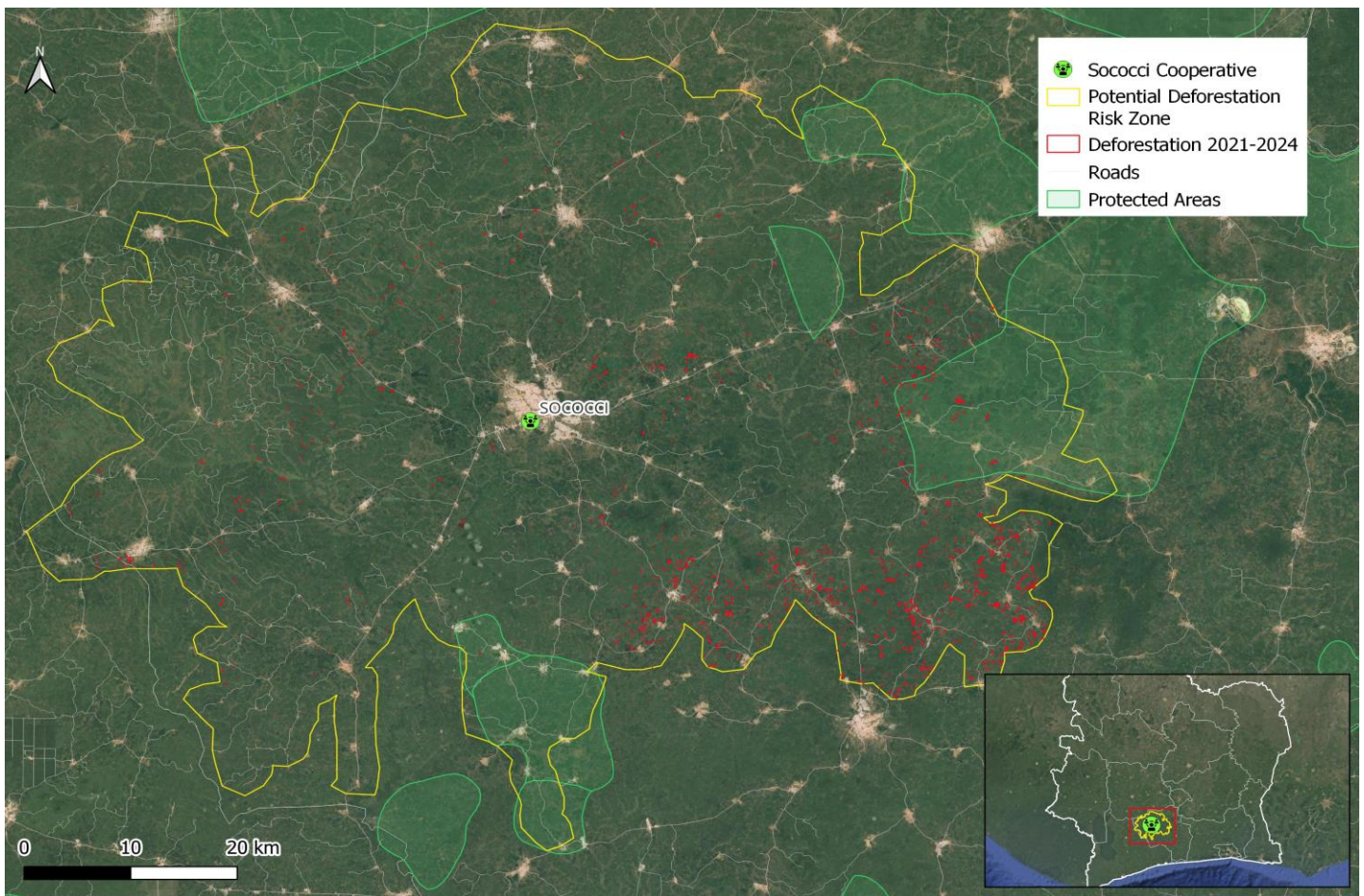
### Cleared Area

**538** hectares

**Period clearance:**  
2021-2024

**Type of vegetation:**  
Eastern Guinean forests

**Imagery:** Cocoa deforestation risk zone linked to Mondelēz Tier-2 supplying cocoa cooperative SOCOCCI in Gagnoa, Gôh-Djiboua (Côte d'Ivoire)



Source: AidEnvironment, based on publicly available information for Côte d'Ivoire, including deforestation data from January 2021 till December 2024 from [Hansen et al., 2013](#). "High-Resolution Global Maps of 21st-Century Forest Cover Change."; OSM Administrative boundaries and roads; WDPA Protected areas. **Note:** While there is double the size of native vegetation loss in this "deforestation-risk zone", AidEnvironment has only included in the "deforestation 2021-2024" layer the loss of forest in confirmed cocoa production areas which is classified as forest by the FAO.

SCAN COOP-CA  
ALLAH-KABO SCOOPS  
**SOCOCCI SCOOPS**  
PHENIPRAD  
SCOPAF

Ste Coop Agri Nesmon  
Ste Coop Simpl Allah Kabo de Duekoue  
Ste Coop de cafe-cacao Ivoirien  
Ste Coop Phénix de Product Agri Durable  
Ste Coop des Prod Agri du Fromager

Screenshot of part of Mondelēz [cocoa supplier list 2021](#), indicating that cocoa cooperative SOCOCCI is an active Tier-2 supplier to Mondelēz, via Tier-1 supplier Barry Callebaut.



## SOCOCCI (Société Coopérative de Café-Cacao Ivoirien)

### Ownership & Business relationship

SOCOCCI

#### Mondelēz response:

The company did not respond after repeated requests in November 2025.

### Certification status



SOCOCCI's Rainforest Alliance certificate (RALI24-026952) **expired** for the period between 21 Sept 2024 and 20 Sept 2025 (1).

### Case description

AidEnvironment detected 1,913 hectares of native vegetation (eastern Guinean forests) clearing between January 2021 and December 2024 in the deforestation-risk buying zone of the cocoa cooperative Société Coopérative de Café-Cacao Ivoirien (**SOCOCCI**), of which **538 ha** (see red polygons in the map of the previous page) intersects with confirmed cocoa production area. This is a conservative estimation of forest loss as SOCOCCI cooperative is located in an exclusively cocoa producing area, with hardly any other crop production. The vegetation cleared is classified as forest under the FAO definition and EUDR definition (2).

While the cooperative was UTZ/Rainforest Alliance certified for several years, its current certification status is “expired”, meaning that “*the validity date of the license has passed, and the license has not been renewed*” (1). Rainforest Alliance however communicated with AidEnvironment (November 2025) that it is “*normal practice in Côte d’Ivoire for cooperative certificates/licenses to expire annually*” and that “*new certificates are issued once cooperatives successfully pass the audit for the upcoming crop season—in this case, the 2025/2026 season*”. SOCOCCI cooperative reported **912 members** (50 women, 862 men) to Rainforest Alliance and an estimated production volume of 1,134,824 KG in 2024-2025, of which 64% (723,420 KG) was sold as certified cocoa (3).

The cooperative is listed as a Tier-2 cocoa supplier of Mondelēz in 2021, via Tier-1 supplier Barry Callebaut (4). Since Mondelēz does no longer publicly disclose its cocoa suppliers list since 2021, for recent trade years, AidEnvironment can only assess the cooperatives (Tier-2) that have continued to supply key Tier-1 suppliers of Mondelēz, including Barry Callebaut, Cargill, ECOM, and Olam. Trase has listed Barry Callebaut as a steady buyer of this cooperative between 2019 – 2023 (4), and therefore likely the trading relationship with Mondelēz also sustained. Moreover, Trase reports that in 2022 and 2023 also ECOM sourced from this cooperative. The combined estimated “buyers farmer base” of Barry Callebaut and ECOM was 2,292 suppliers in 2023 (5).

The clearing occurred after Mondelēz’ pledge for deforestation-free cocoa with a 31 December 2020 cut-off date and includes clearance within the boundaries of protected areas (Sangoué and Nizoro). The nearest of these protected areas is located within 20 km of the cooperative.

Mondelēz may not be able to achieve negligible risk in their due diligence efforts under its own company commitments or the EUDR when indirectly buying cocoa beans from SOCOCCI, through cocoa traders such as Barry Callebaut and ECOM.

- (1) Rainforest Alliance List of Certificate Holders, online: <https://www.rainforest-alliance.org/business/certification/certificate-search-and-public-summaries/>, viewed in October 2025.
- (2) EU Forest Observatory, online: <https://forest-observatory.ec.europa.eu/forest>, viewed in October 2025.
- (3) Pers. Comm. Rainforest Alliance, 28 November 2025.
- (4) Mondelēz public Cocoa [Tier-1 and Tier-2 Supplier List](#) (2021), viewed in October 2025.
- (5) Trase facilities map Côte d’Ivoire, online: <https://trase.earth/explore/facilities-data/map?facilityTypeId=cote-d-ivoire-cocoa-cooperatives>, viewed in October 2025.