



SOCAAN (Société Coopérative Agricole Adzopé Nord)

Location: La Mé Region, Adzopé; Lagunes

Biome: Tropical & Subtropical Moist Broadleaf Forests (Côte d'Ivoire)

Coordinates cooperative: 6.096; -3.861

Cleared Area

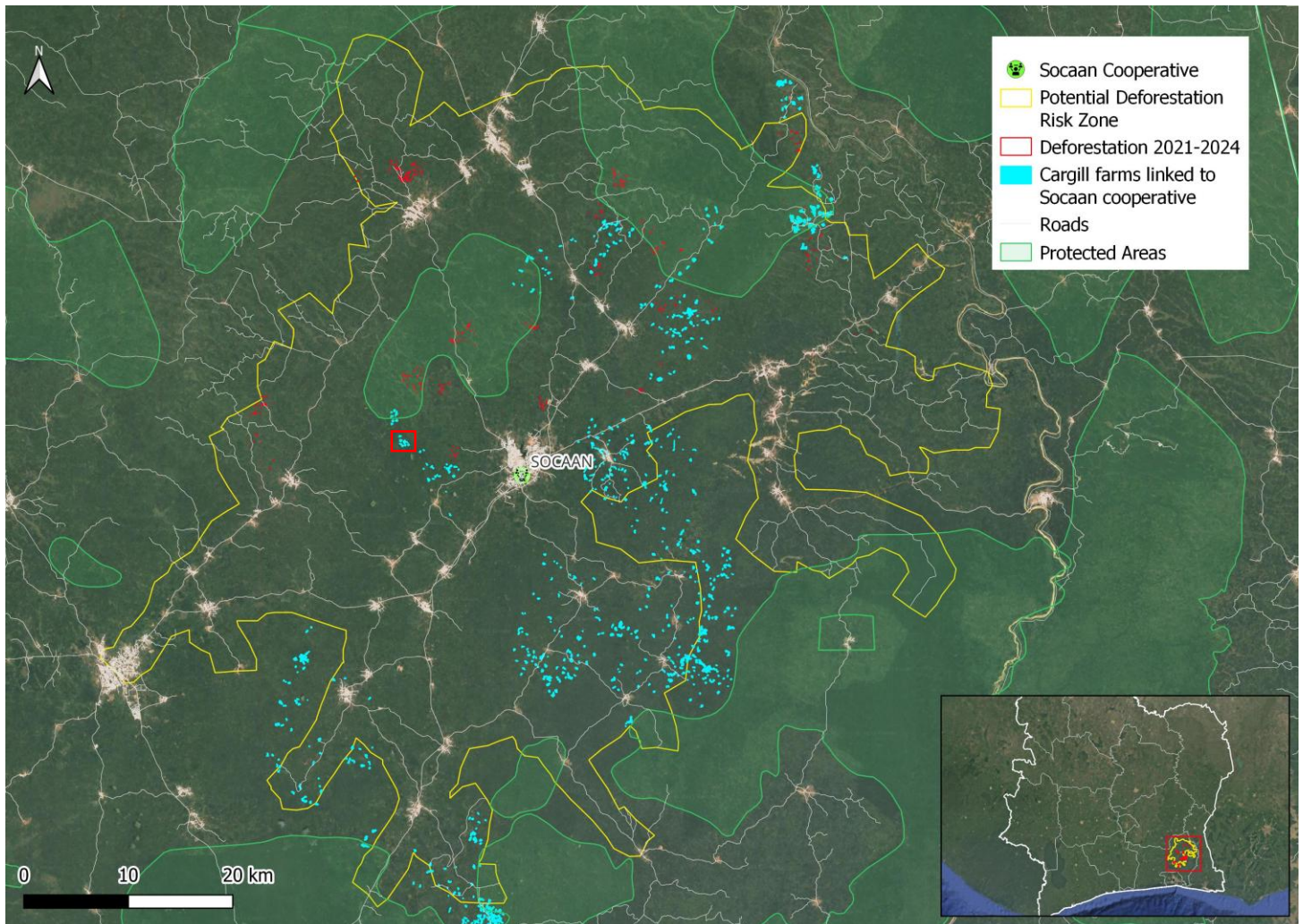
106

hectares

Period clearance:
2021-2024

Type of vegetation:
Eastern Guinean Forests

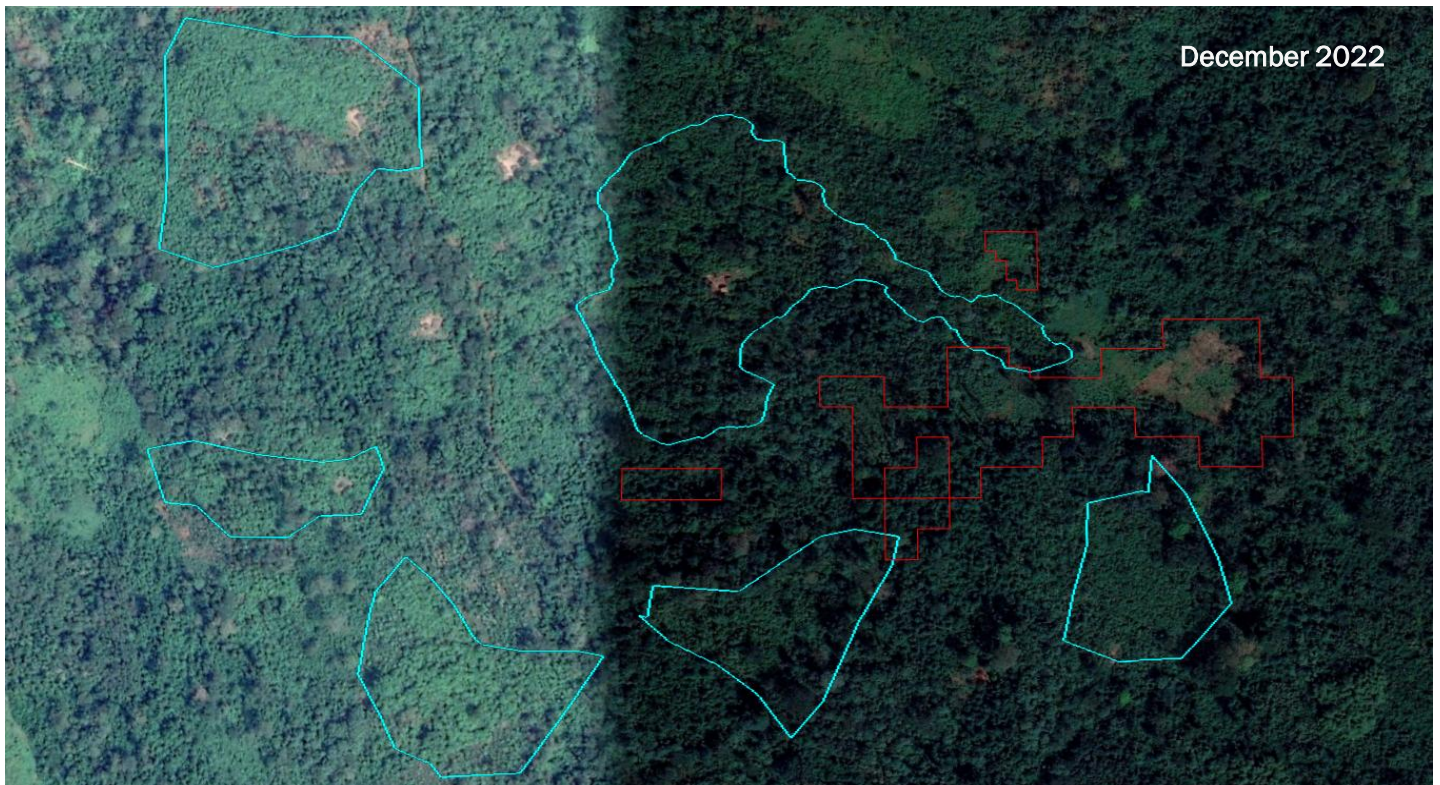
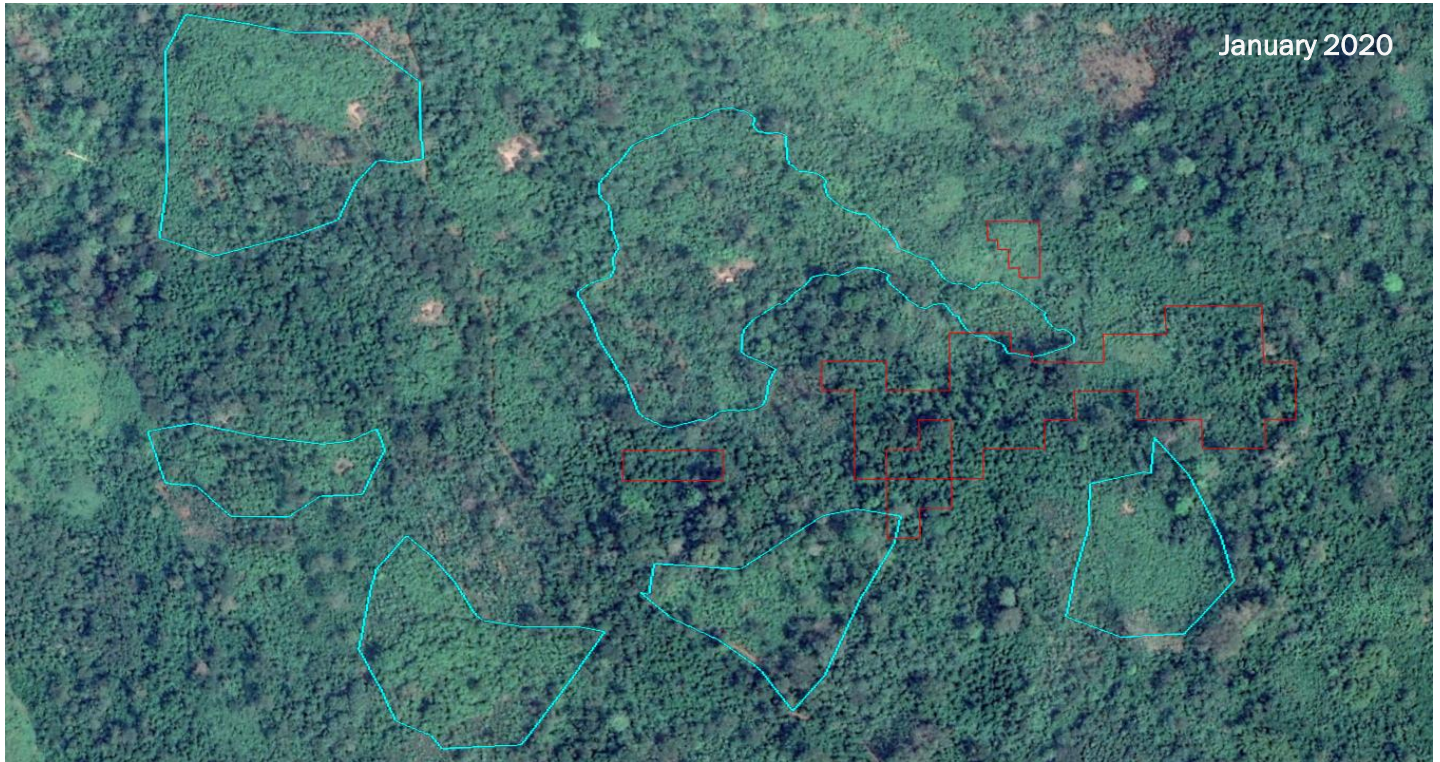
Imagery: Cocoa deforestation risk zone linked to likely Tier-2 Mondelēz supplying cocoa cooperative SOCAAN in La Mé Region, Adzopé; Lagunes district (Côte d'Ivoire)



Source: AidEnvironment, based on publicly available information for Côte d'Ivoire, including deforestation data from January 2021 till December 2024 from [Hansen et al., 2013](#). "High-Resolution Global Maps of 21st-Century Forest Cover Change."; OSM Administrative boundaries and roads; Cargill cocoa farms 2019-2020 (undisclosed source); WPA Protected areas. **Note:** While there is significant native vegetation loss in this whole "deforestation-risk zone" (a total of **9,194 ha**), AidEnvironment has only included in the "deforestation 2021-2024" layer the loss of forest in confirmed cocoa production areas which is classified as forest by the FAO (**106 ha**). The red box represents the location of a cluster of Cargill supplying farms to SOCAAN cooperative (see next page).

SOCAAN (Société Coopérative Agricole Adzopé Nord)

Imagery: Cargill cocoa farms (blue polygons) with adjacent deforestation (red polygons) inside SOCAAN cocoa deforestation risk zone in La Mé Region, Adzopé; Lagunes (Côte d'Ivoire)



Source: AidEnvironment, based on deforestation data from January 2021 till December 2024 from [Hansen et al., 2013](#). "High-Resolution Global Maps of 21st-Century Forest Cover Change"; Cargill cocoa farms 2019-2020 (undisclosed source). The cleared vegetation in the red polygons (4.02 hectares) is classified as forest by the FAO. Coordinates of the deforestation: 6.12312, -3.96344. See also red box in the previous page imagery for the location of this cluster of Cargill farms within the buying zone.



SOCAAN (Société Coopérative Agricole Adzopé Nord)

Ownership & Business relationship

SOCAAN

Mondelēz response:

The company did not respond after repeated requests in November 2025.

Certification status



SOCAAN Rainforest Alliance certificate (RALI24-028888) is **granted** for the period between 23 October 2024 and 22 October 2025 (1).

Case description

Since Mondelēz does no longer publicly disclose its cocoa suppliers list since 2021 (SOCAAN was not part of that list), for recent trade years AidEnvironment can only assess the cooperatives (Tier-2) that supply key Tier-1 suppliers of Mondelēz, including Cargill and Olam (2). SOCAAN has a long-standing relationship with Cargill and consistently supplied the company between 2012 and 2023 (later years are undisclosed) (3). In 2023, the estimated supplier base from this cooperative to Cargill is 1,441 cocoa farmers. Trase has further listed Olam as a buyer of this cooperative between 2019 and 2021.

SOCAAN was founded in 2008, and self-reports to have 3,000 members farmers, with a projected production of 12,000 tons of cocoa beans by 2025 of which at least 5,000 tons is destined for export (4), mostly through its key client Cargill (5). SOCAAN cooperative reported **1,364 members** (6 women, 1,358 men) to Rainforest Alliance and an estimated production volume of 2,391,691 KG in 2024-2025, of which 77% (1,849,204 KG) was sold as certified cocoa (5). The numbers demonstrate a very limited number of female cocoa producers involved in the cooperative.

While the cooperative is rewarded for sustainable cocoa production and reforestation projects (7), there is significant clearing surrounding the cooperative. AidEnvironment detected **9,194 hectares** (ha) of native vegetation (Eastern Guinean Forests) clearing between January 2021 and December 2024 in the deforestation-risk buying zone of the cocoa cooperative SOCAAN, but only **106 ha** intersects with confirmed cocoa production area and the FAO/EUDR forest definition (8) (see red polygons in the map of the previous page). This is a very conservative estimation of forest loss as SOCAAN cooperative is located in an exclusively cocoa producing area, with hardly any other crop production.

The clearing occurred after Mondelēz' pledge for deforestation-free cocoa with a 31 December 2020 cut-off date and includes clearance within the boundaries of protected areas (Besso and Adzope). The nearest of these protected areas is located within 12 km of the cooperative.

AidEnvironment identified that some of the clearing happened within (or very close to) cocoa farms that are directly linked to Cargill, a total of **11.5 ha** (9). The photos in the previous page reveal the proximity of deforestation in the middle of a cluster of Cargill cocoa supplying farms, making it very likely that the cleared land will be used for cocoa production. Mondelēz, supplied in Europe by cacao traders such as Cargill and Olam, may therefore not be able to achieve negligible risk in its due diligence efforts under its own company commitments or the EUDR when potentially indirectly buying cocoa beans from SOCAAN cooperative.

- (1) Rainforest Alliance List of Certificate Holders, online: <https://www.rainforest-alliance.org/business/certification/certificate-search-and-public-summaries/>, viewed in October 2025.
- (2) Mondelēz public Cocoa [Tier-1 and Tier-2 Supplier List](#) (2021), viewed in October 2025.
- (3) Trase facilities map Côte d'Ivoire, online: <https://trase.earth/explore/facilities-data/map?facilityTypeld=cote-d-ivoire-cocoa-cooperatives>, viewed in October 2025.
- (4) SOCAAN website, online: [Presentation – SOCAAN](#), viewed in October 2025.
- (5) *Pers. Comm.* Rainforest Alliance, 28 November 2025
- (6) SOCAAN website, online: [Nos partenaires – SOCAAN](#), viewed in October 2025.
- (7) Online: <https://www.aip.ci/151728/cote-divoire-aip-une-societe-cooperative-agricole-dadzope-distinguee-par-le-grand-prix-nelson-mandela>, viewed in October 2025.
- (8) EU Forest Observatory, online: <https://forest-observatory.ec.europa.eu/forest>, viewed in October 2025.
- (9) Undisclosed source on Cargill cocoa farms connected to cooperative SOCAAN (2019-2020).