



ETS Tchouala Cooperative

Location: Nkondjok; Littoral; Nkam

Biome: Tropical & Subtropical Moist Broadleaf Forests (Cameroon)

Coordinates cooperative: 10.26750, 4.94583

Cleared Area

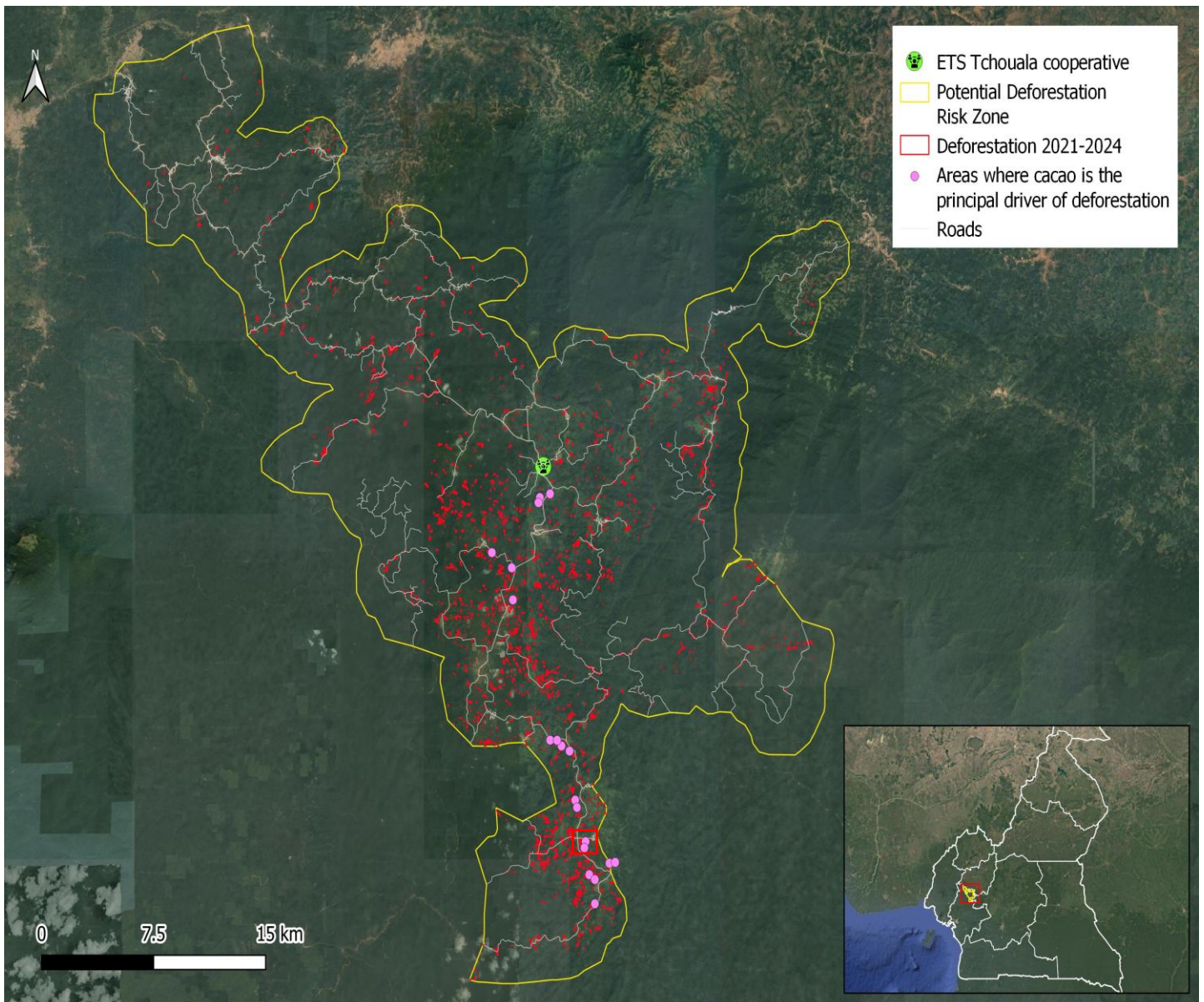
716

hectares

Period clearance:
2021-2024

Type of vegetation:
Cameroon Highlands Forests

Imagery: Cocoa deforestation risk zone linked to Barry Callebaut’s (Tier-1 supplier to Mondelēz) supplying cocoa cooperative ETS Tchouala Cooperative in Littoral district in Nkam department (Cameroon)

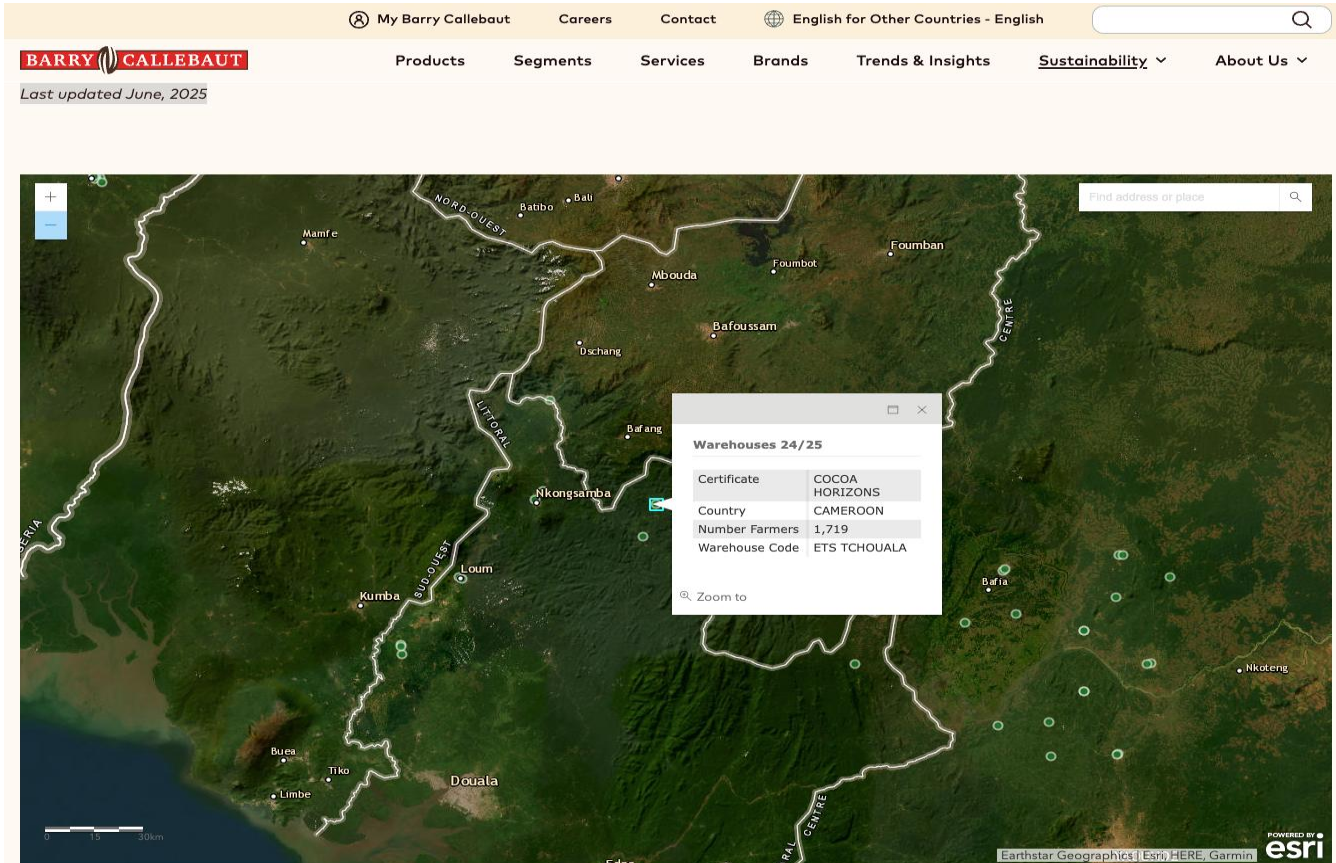


Source: AidEnvironment, based on publicly available information for Cameroon, including deforestation data from January 2021 till December 2024 from [Hansen et al., 2013](#). “High-Resolution Global Maps of 21st-Century Forest Cover Change.”; OSM Administrative boundaries and roads; company cooperative disclosures; WDPA Protected areas; [EU Sustainable Cocoa Programme](#) “Cameroon Cocoa Extent 2020”. The pink dots refer to areas where cocoa is the principal driver of deforestation, as visually confirmed in a field study by [Mighty Earth/CODED](#). The red rectangle points to the ‘area zoom’ in the next page. **Note:** While there is a higher total amount of native vegetation loss in this “deforestation-risk zone”, AidEnvironment has only included in the “deforestation 2021-2024” layer the loss of forest (as defined by the EU Forest Observatory) in the 2020 Cameroon Cocoa Extent [layer](#).



ETS Tchouala Cooperative

Screenshot of Barry Callebaut’s cocoa suppliers in Cameroon, indicating that cocoa cooperative ETS Tchouala is an active supplier of Barry Callebaut, one of Mondelēz’ main Tier-1 suppliers.



Source: Barry Callebaut cocoa suppliers, last updated June, 2025. Online: <https://www.barry-callebaut.com/en/sustainability/our-sustainable-raw-materials/transparency-and-traceability-our-cocoa-supply-chain>, viewed in November 2025.



Imagery: Cocoa farm with deforestation (red polygon) inside ETS Tchouala cocoa deforestation risk zone in Nkondjok Arrondissement, in Littoral district, in Nkam department (Cameroon)

Source: AidEnvironment, based on deforestation data from January 2021 till December 2024 from [Hansen et al., 2013](#). “High-Resolution Global Maps of 21st-Century Forest Cover Change”; [Mighty Earth/CODED](#) field research. The cleared vegetation in the red polygon (2.3 hectares) is classified as forest by the FAO. Coordinates of the deforestation: 4.754618, 10.293049. See also red box in the previous page imagery for the location of this area within the ETS Tchouala buying zone.



ETS Tchouala Cooperative

Ownership & Business relationship

ETS
Tchouala

Mondelēz response:

The company did not respond after repeated requests in November 2025.

Certification status

- No certification status was identified for ETS Tchouala Cooperative.

Case description

AidEnvironment detected 716 hectares (ha) of native vegetation (Cameroon Highlands Forests) clearing in the deforestation-risk buying zone of the cocoa Cooperative ETS Tchouala between January 2021 and December 2024. The cleared vegetation is classified as forest under the FAO definition and EUDR definition (1). A June 2025 CODED-Mighty Earth field study (2) visually confirmed cocoa-related deforestation in numerous data collection points in this buying zone of the Cooperative located in the Nkondjok Arrondissement, in Littoral district, Nkam department (Cameroon) (see also previous pages). In addition, interviewed farmers confirmed new and recent clearing for cocoa production, primarily driven by the decline in global coffee prices (*ibid*). Moreover, communities interviewed in Nkondjok area indicated that "deforestation is typically driven by a combination of economic necessity and the availability of unclaimed forest land."

Mondelēz does not disclose its Cameroonian cocoa suppliers (3), despite Cameroon being part of Mondelēz' Cocoa Life programme (4). Considering Barry Callebaut's key role as a cocoa exporter of Cameroon under its subsidiary Sic Cacaos (2nd largest cocoa exporter after KSW Global) (5) and being a Tier-1 supplier of Mondelēz in Côte d'Ivoire (3), it is very likely that Barry Callebaut will also supply Mondelēz from Cameroon. Cooperative ETS Tchouala is listed as an active supplier of Barry Callebaut under its Cocoa Horizons Programme in June 2025, with a supplier base of 1,719 farmers in the cooperative surrounding region (6). The cooperative is therefore also a likely (indirect) Tier-2 cocoa supplier to Mondelēz.

Informal "coxeurs", who purchase cocoa from the farmers and sell to cocoa traders, play a pivotal role in Cameroon's cocoa supply chain. In Mighty Earth's-CODED field visit, interviewed cocoa farmers in the cleared areas mainly sold cocoa to these intermediary supply chain actors. Only few farmers "had any knowledge of their cocoa's final destination, and even cooperative representatives admitted they do not track where the cocoa ends up once aggregated and sold" (2).

All identified clearing occurred after Mondelēz' pledge for deforestation-free cocoa with a 31 December 2020 cut-off date. Mondelēz may not be able to achieve negligible risk in their due diligence efforts under its own company commitments or the EUDR when indirectly buying cocoa beans from ETS Tchouala Cooperative, through Cameroon's second largest cocoa exporter Barry Callebaut.

- (1) EU Forest Observatory, online: <https://forest-observatory.ec.europa.eu/forest>, viewed in October 2025.
- (2) Mighty Earth-CODED (June 2025), *Cameroon on the Brink: Cocoa's new deforestation frontier*, online: <https://drive.google.com/file/d/1BmtvL-8EBM2M5191nNQIBLZPkFupGQo/view>, viewed in November 2025.
- (3) Mondelēz public Cocoa [Tier-1 and Tier-2 Supplier List](#) (2021), viewed in October 2025.
- (4) Cocoa Life Programme Mondelēz, online: <https://www.cocoalife.org/in-the-cocoa-origins/>, viewed in November 2025.
- (5) Sample of recent Cameroonian cocoa export data between 31 January 2025 and 21 July 2025 for HS codes 1801 till 1806.
- (6) Barry Callebaut - Cocoa Suppliers, online: <https://www.barry-callebaut.com/en/sustainability/our-sustainable-raw-materials/transparency-and-traceability-our-cocoa-supply-chain>, viewed in November 2025.