

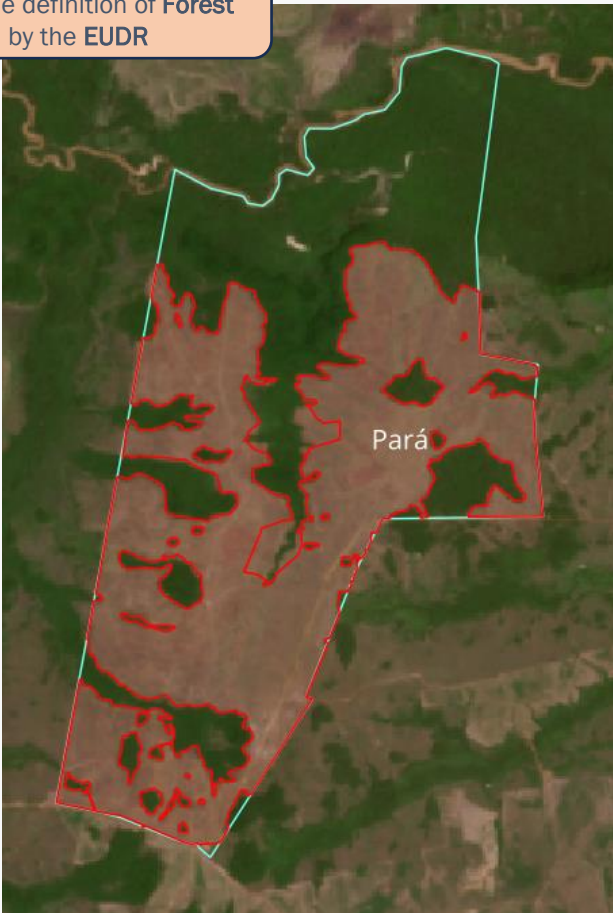
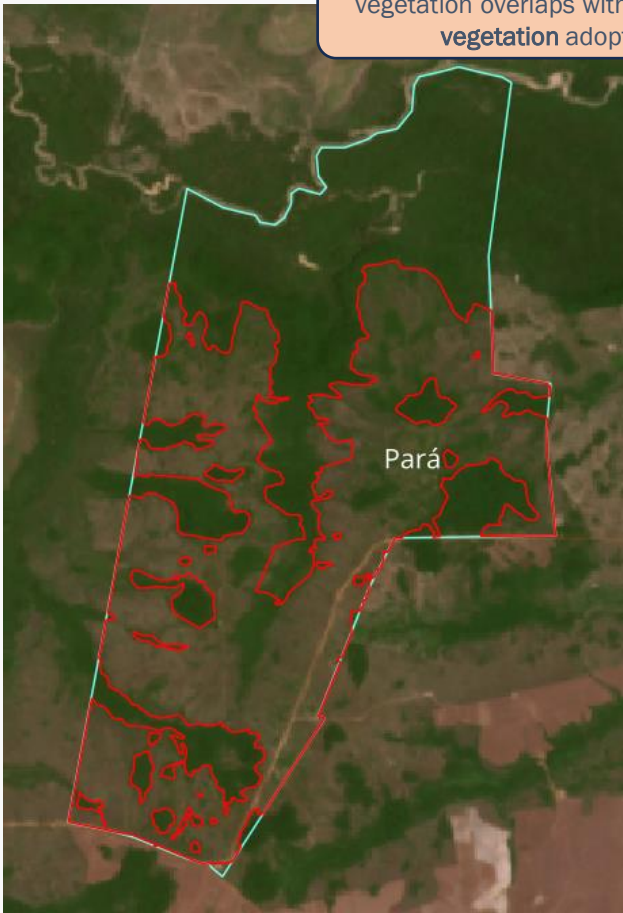
Property			
<b>Fazenda Campinas Verdes</b>			
Santa Maria das Barreiras, Pará		<b>Amazon and Cerrado biomes</b>	
<b>CAR:</b>	PA-1506583-8F139E66A5B34DE5B5BC4C5101418106 (pending)	<b>SIGEF/SNCI:</b>	9511108549723
<b>Area property (ha):</b>	1,073	<b>Coordinates property:</b>	-8.359190,-49.796205
Cleared Area			
<b>Coordinates clearance:</b>		-8.354345,-49.789775	
<b>599 hectares</b>		<b>period clearance:</b>	December '23
<b>5,734 tons of CO<sub>2</sub></b>			
<b>- fires alerts</b>			
<b>Inside Forest Code's protected areas:</b>	Yes	6.34 ha inside declared Legal Reserve	
<b>Type of vegetation:</b>	Woody-grass Savanna	<b>Priority for Biodiversity Conservation:</b>	Extremely high
<b>Conservation area(s) (overlapping or bordering):</b>		-	
<b>Indigenous Territories (overlapping or bordering):</b>		-	

**Imagery:** limits of the property (green), limits of the cleared area (red)

November 2023

December 2023

At least **20 ha** of the cleared area of native vegetation overlaps with the definition of **Forest vegetation** adopted by the **EUDR**



Source: Imagery ©2023 Planet Labs Inc.

Source: Imagery ©2023 Planet Labs Inc.

Environmental fines and embargoes			
<b>Embargoes:</b>	No	-	
<b>Environmental fines:</b>	No	-	-
Ownership and other linked properties			
<b>Ownership:</b>	Antônio Alves Pinto Neto / Antônio Augusto Alves Pinto		
<b>Company group:</b>	No active linked company found.		
<b>Linked properties:</b>	1 other property with a linked ownership (Antônio Augusto Alves Pinto) in Santa Maria das Barreiras (PA): Fazenda Campos Verdes (3,703 ha), bordering Fazenda Campinas Verdes		
Supply chain links			
<b>Main Commodities</b>	Beef and Soy		
<b>Level of certainty of a potential trading link to soy trader/ beef processor</b>		<b>High</b>	<b>JBS</b>
<b>Soy</b>	<b>Warehouses</b> (50 km radius)	4 silos, all owned by regional traders	
	<b>Supply chain links &amp; details:</b>	-	
<b>Beef</b>	<b>Slaughterhouses</b> (sourcing from the municipality)	-	
	<b>Supply chain links &amp; details:</b>	Fazenda Campinas Verdes indirectly supplied cattle to JBS (Redenção - PA) through Fazenda Campos Verdes in 2022, a linked and bordering property	
<b>Other supply chain links and details:</b>		-	
General comments			
<p>The property does not have soy cultivation (2022) but is surrounded by soy areas (1). According to the Selo Verde Platform, the property has illegal deforestation after 2008 (2). Antônio Alves Pinto Neto is an agronomist and works as a salesman in the south of Pará for Stoller Group, an American crop chemicals company (3).</p>			

(1) <https://www.globalforestwatch.org/map/>

(2) <https://seloverde.info/consultar-car/>

(3) <https://www.linkedin.com/in/ant%C3%B4nio-alves-pinto-neto-a4a712124/>