

Fazenda Santa Fé



Location: São Félix do Xingu, Pará
 Area property (ha): 287

Biome: Amazon (Brazil)
 Coordinates property: -6.6532, -52.1387

Cleared Area

133	hectares	Period clearance: August - September 2024	Type of vegetation: Dense-canopy rainforest, submontane (also known as Submontane Dense Humid Forest)
75,588	tons of CO ₂		

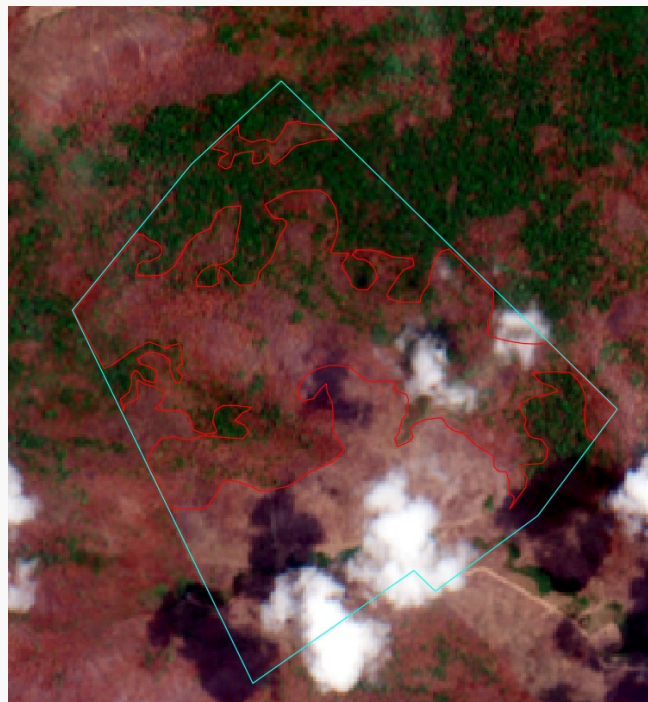
July 2024, ©2025 Planet Labs Inc

Imagery: Fazenda Santa Fé cleared an area of 133 hectares by fire between August 2024 and September 2024. Source: AidEnvironment. Imagery ©2025 Planet Labs Inc; Copernicus browser.



About **88 ha** of native vegetation cleared area falls into the FAO Forest definition and is **non-compliant with the EUDR**

September 2024, Source: Copernicus browser



Imagery: Active fire in the farm on 14 September 2024. Source: Copernicus browser.

Fazenda Santa Fé



Ownership & Business relationship

Owner: Alexandre Dias Olivo PA-1507300- 51620307993A40 908A1DBD526902 3F45	In response to a draft version of five beef/leather case studies shared with FriGol and JBS on 2 October 2025, Frigol states (22 October 2025): “it has never purchased from Fazenda Santa Fé. All other mentioned properties — Chácara Nossa Senhora da Guia, Fazenda Fernanda, Fazenda Aliança, Fazenda Igarapé Vermelho, and Sítio Murubeca — are direct suppliers to FriGol and have no known socio-environmental issues, in accordance with the criteria of the Beef on Track Protocol.” AidEnvironment believes that Frigol’s response deflects responsibility by focusing narrowly on direct purchases, ignoring the well-documented indirect cattle transfers potentially linking it to deforestation at Fazenda Santa Fé —precisely the kind of indirect sourcing loophole the Beef on Track Protocol and EUDR aim to close. JBS response: JBS stated (23 October 2025): “AidEnvironment failed to demonstrate the movement of cattle from the aforementioned farms to JBS facilities. None of them are JBS suppliers.” However, follow-up questions from AidEnvironment revealed that JBS was only referring to its direct purchases from the alert cases, while confirming that the indirect farms mentioned in the cases studies (here: Fazenda Igarapé Vermelho) are direct suppliers of JBS, reportedly “all in compliance with industry protocols and the company’s responsible raw material purchasing policy”. Similar to Frigol, JBS is ignoring the well-documented indirect cattle transfers potentially linking it to deforestation at Fazenda Santa Fé.
---	--

Environmental sanctions

Embargoes: No

Environmental fines: No

Case description

Fazenda Sante Fé, located in São Félix do Xingu (Pará) municipality, has cleared 133 ha of native vegetation classified as “dense-canopy rainforest” since the EUDR cut-off date of 31 December 2020. Under the forest definition used by the EUDR, 88 ha (66%) of this can be classified as forest (1). The clearing occurred by fires razing the farm in September 2024. While alert systems such as DETER (deforestation and fires) and NASA VIIRS (fires) detected the fires in the farm under investigation, MapBiomas Alerta and PRODES, due to some delay in the confirmation process, do not seem to pick up this native vegetation clearing by fire in the farm and often only detect the already degraded land. This seems to be a major loophole in the national deforestation tracking system in Brazil, and AidEnvironment, based on yearly remote satellite monitoring, perceives this as leading to increased clearing by fire to avoid the national tracking system. The farm does not seem to have a plant suppression authorization; therefore, the clearing can be considered likely illegal under Brazilian law (2). According to the Selo Verde platform, the CAR for Fazenda Santa Fé is noncompliant with the criteria of the Amazon cattle supplier monitoring protocol. The platform points out that the property has legal reserve deficit and permanent preservation area deficit and confirms the lack of authorization to remove native vegetation (3). The Selo Verde platform also points out that the property’s CAR had been modified. The change resulted in a 20% reduction in the area overlapping with PRODES deforestation polygons. The strategy of altering environmental registrations has been studied in an analysis by the Center for Climate Crime Analysis (CCCA), which identified how landowners make changes to the perimeters of their farms to “erase,” at least on paper, environmental irregularities on their farm (4).

Fazenda Santa Fé is a direct supplier to various major meatpackers, including JBS - Tucumã slaughterhouse in Pará, Marfrig Global Foods - Tucumã slaughterhouse, and FriGol’s slaughterhouse in São Félix do Xingu (Pará) (5). For instance, between October 2018 and June 2021, Fazenda Santa Fé supplied 175 bovine animals for slaughter to the FriGol abattoir, contrary to statements from Frigol that it never sourced from Santa Fé (see above). Indirectly, the farm also supplies FriGol, via various in-between farms. For instance, in June 2023, Fazenda Santa Fé supplied 41 animals for fattening to Chacara Nossa Senhora Da Guia in São Félix Do Xingu, that in turn supplied 516 bovine animals to FriGol’s slaughterhouse between 2018-2023. Or indirectly via Fazenda Fernanda in São Félix Do Xingu, that supplied 1,065 animals for slaughter to FriGol between 2018-2022, while it received 108 animals for fattening from Fazenda Santa Fé in 2022. Moreover, a linked property, Fazenda Aliança (similar ownership) in São Félix do Xingu-PA, directly supplied FriGol in Água Azul do Norte-PA, according to animal transit guides (GTAs) registered by Alexandre Olivo on May 12, 2025 (6). Two GTAs, registered on the same day, May 12, and on May 7, indicate the transfer of animals from the Fazenda Santa Fé to this Fazenda Aliança. In February 2025, Fazenda Santa Fé also indirectly supplied FriGol in São Félix do Xingu and Água Azul do Norte-PA through Fazenda Igarapé Vermelho. From February to June 2025, Fazenda Igarapé Vermelho directly supplied JBS in Marabá, Redenção, Santana do Araguaia and Tucumã-PA. In 2024, between February, March and April, Fazenda Santa Fé indirectly supplied the same units of FriGol through Sítio Murubeca and Chácara Nossa Senhora da Guia, both in São Félix do Xingu-PA.

A recent investigation of Earthsight (2025) revealed that FriGol likely indirectly supplied bovine hides to the leather industry in Italy through Brazilian leather producer Durlicouros, that indirectly, through Italian tanneries Conceria Cristina and Faeda, supplied European high-fashion brands such as Coach (see also page 8 of this report) (5). These European operators and downstream brands may have been (indirectly) linked to the noncompliant farm reported in this case. Continued (indirect) sourcing from this farm with deforestation after the EUDR cut-off date may also create future deforestation and legality noncompliance issues under the Regulation. Also, under Brazilian law this case implies irregularities and noncompliance (3).

- (1) EU Forest Observatory Global Forest Map, online: <https://forest-observatory.ec.europa.eu/forest>, viewed in August 2025.
- (2) Mapbiomas Alerta, online: <https://plataforma.alerta.mapbiomas.org>, with CAR-number PA-1507300-51620307993A40908A1DBD5269023F45, viewed in September 2025.
- (3) Selo Verde, online: <https://seloverde.info/consultar-car/>, viewed in September 2025.
- (4) CCCA, online: <https://climatecrimeanalysis.org/analysisofcarmodifications/>, viewed in September 2025.
- (5) Animal Transit Data (GTA data) Mato Grosso (undisclosed).
- (6) Animal Transit Data from the Agricultural Defense Agency of the State of Pará (Adepará) (undisclosed).
- (7) Earthsight (2025), online: <https://www.earthsight.org.uk/news/hidden-price-luxury>, viewed in August 2025.
- (8) Brazilian beef exports (HS 0202 and 0201) to the EU27 between 1 January 2021 and 30 November 2023, filtered for shipper FriGol.