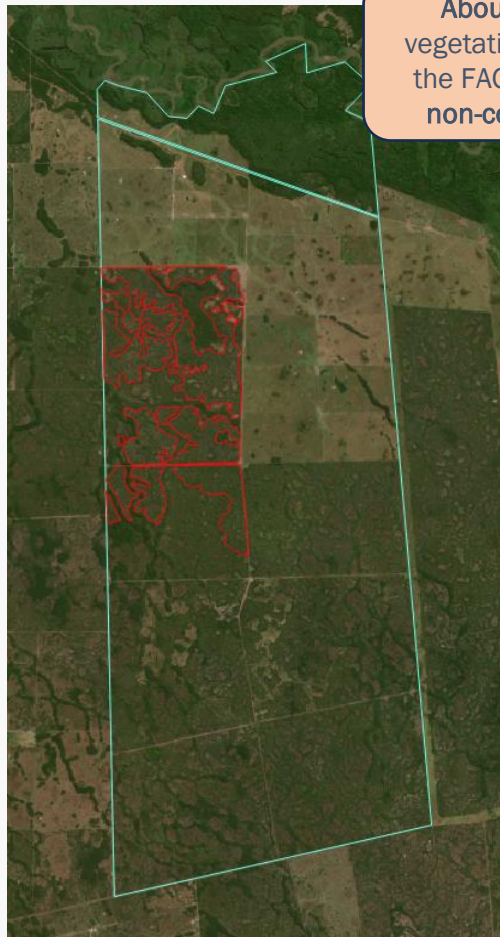


Property			
Fazenda Santa Catarina			
Cáceres, Mato Grosso		Pantanal biome	
MT-5102504- CAR: F9E45B7D3C714407847AFED14F910181 (pending analysis)		SIGEF/SNCI: 9020121370739	
Area property (ha):	9,122	Coordinates property:	-16.32532,-57.92150
Cleared Area			
Coordinates clearance:		-16.35100,-57.92361	
857 hectares		period clearance:	July '23 to January '24
15,695 tons of CO ₂			
- fires alerts			
Inside Forest Code's protected areas:	No - -		
Type of vegetation:	Seasonal parkland savanna	Priority for Biodiversity Conservation:	Very high
Conservation area(s) (overlapping or bordering):		-	
Indigenous Territories (overlapping or bordering):		-	

Imagery: limits of the property (green), limits of the cleared area (red)

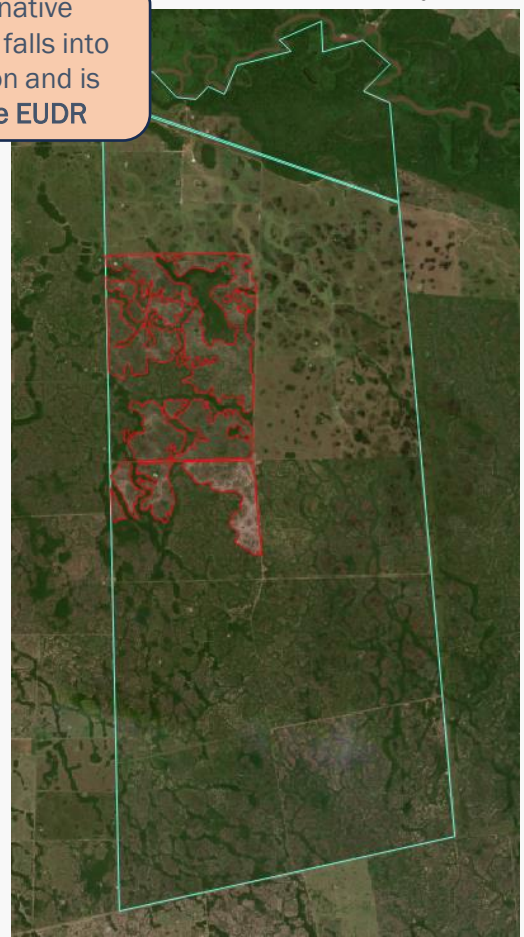
June 2023



Source: Imagery ©2023 Planet Labs Inc.

About 800 ha of the native vegetation cleared area falls into the FAO Forest definition and is non-compliant with the EUDR

January 2024



Source: Imagery ©2024 Planet Labs Inc.

Environmental fines and embargoes

Embargoes:	Yes	1 embargo in 2020 for clearing 75 ha of native vegetation without authorization in 2019.	
Environmental fines:	Yes	1 environmental fine, issued in 2020, for clearing 75 ha of native vegetation in Fazenda Santa Catarina without authorization in 2019. 1 environmental fine in 2003 in Cáceres (MT) for the clearing of 300 hectares of native vegetation in disagreement with the authorization provided by Ibama.	BRL 30,000

Ownership and other linked properties

Ownership:	José Dalbem, Catarina Maria Mesquista Garcia Dalbem
Company group:	JDCD - Participações Ltda (Raising beef cattle company) registered in Cáceres – MT
Linked properties:	2 linked properties in Cáceres (MT) totalling 6,713 hectares: Fazenda Pescaria II (2,812 ha) and Fazenda Santo Antonio (3,901 ha)

Supply chain links

Main Commodities	Beef		
Level of certainty of a potential trading link to soy trader/ beef processor	High / Medium	JBS / Minerva	

*The link to **Marfrig** was removed as the company informed that Fazenda Santa Catarina (Cáceres - MT) has been blocked from its supplier list since 2020 and Fazenda Santo Antônio (direct supplier) since June 2022. The link to **Minerva** was maintained because although the company informed us that Fazenda Santa Catarina (Cáceres - MT) is blocked from its supplier list, it confirmed trading links to the direct supplier, Fazenda Santo Antônio (Cáceres - MT).*

Soy	Warehouses (50 km radius)	2 silos within a 50km radius from the property, both owned by regional traders
	Supply chain links & details:	-

Beef - supply chain links & details

Directly supplied Marfrig (Várzea Grande - MT, Pontes e Lacerda - MT) in 2019, and JBS (Pontes e Lacerda - MT) in 2018. Indirectly supplied JBS (Araputanga - MT, Diamantino - MT) in 2018, 2019 and 2021 through the property Fazenda Santo Antônio (same ownership; José Dalbem) (Cáceres - MT), as well as to Marfrig (Pontes e Lacerda - MT, Várzea Grande - MT) in 2019 and 2022, and Minerva (Mirassol d'Oeste - MT) in 2018 and 2019.

Other supply chain links and details:

-

General comments

The property Santa Catarina was listed in the Greenpeace report "Making Mincemeat of the Pantanal", published in 2021 (1). The report indicated 2,888 ha of native vegetation burned in Fazenda Santa Catarina between July and October 2020. According to the Greenpeace report, Fazenda Santa Catarina and the linked property Fazenda Santo Antônio are certified for beef exports to the EU (1). At the time of the publication of the Greenpeace report, JBS replied by stating a trading connection with the linked farm, Fazenda Santo Antônio, and stating that environmental fines from 10 years ago are not a criterion to block the Santa Catarina farm from their supply chain. Please note that the present RDM report identified an environmental fine issued in 2020 for the illegal clearance of 75 ha of native vegetation in Fazenda Santa Catarina. Marfrig replied that at the date of the trading with Fazenda Santa Catarina, it was complying with the company's public commitments, and Minerva replied stating that the direct supplier (Fazenda Santa Catarina) was blocked from their supply chain on July 2020, but the indirect supplier, Fazenda Santo Antônio at the time of the report publication, was still part of the companies' suppliers (1).

(1) https://www.greenpeace.org/static/planet4-international-stateless/2021/03/77f3941a-0988_gp_pan_mincemeat_v9.95_mixedres.pdf