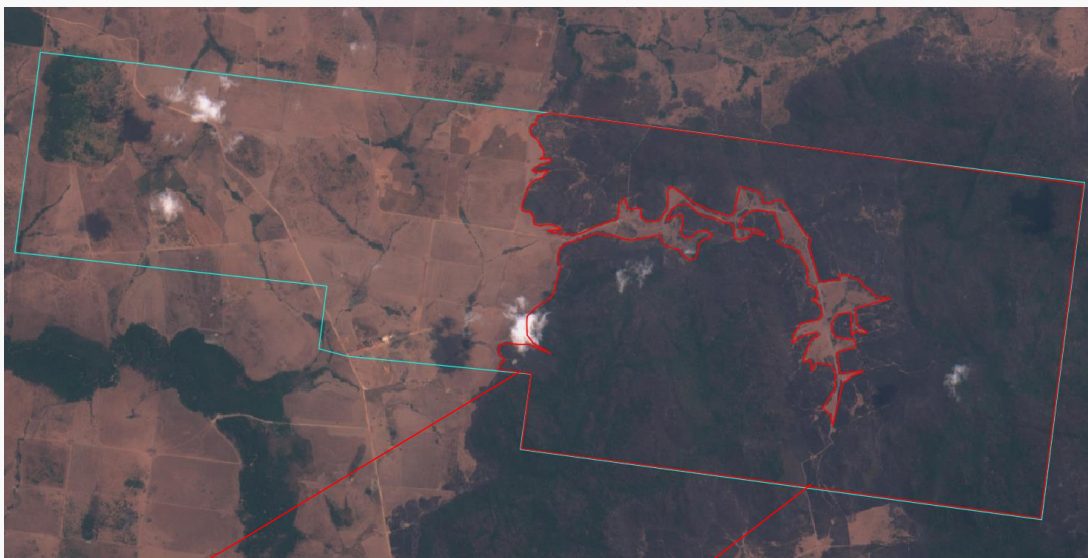


Property	
Fazenda Tigre	
São Félix do Xingu, Pará	Amazon biome
CAR: PA-1507300-B92F7B3AAA154DB58E59326C5021CC7F	SIGEF/SNCI: 9501306079753
Area property (ha): 4,766	Coordinates property: -51.47564, -9.64946
Cleared Area	
Coordinates clearance:	-51.46748, -9.65819
2,717 hectares	period clearance: September 2022
91 fires alerts	
Inside Forest Code's protected areas: Yes	2161 ha inside declared Legal Reserve
Type of vegetation: Ombrophilous Open Forest	Priority for Biodiversity Conservation: No
Conservation area(s) (overlapping or bordering): -	
Indigenous Territories (overlapping or bordering): -	

Imagery: limits of the property (blue) limits of the cleared area (red)

September 2022



Source: Imagery ©2022 Planet Labs Inc.

Fires

12th September 2022



Source: European Union - EO Browser Copernicus Sentinel data 2022



Source: European Union, contains modified 2022, processed with EO Browser Copernicus Sentinel data

Environmental fines and embargoes			
Embargoes:	Yes	1 embargo for degradation of 1,970 ha of native vegetation in Fazenda Tigre (São Félix do Xingu - PA) in June 2018	
Environmental fines:	No	-	-
Ownership and other linked properties			
Ownership:	Bertier da Silva Filho		
Company group:	Linked to the gas/fuel station "Grupo Tigrão", with more than 12 different registered companies in Mato Grosso (Confresa, Ribeirão Cascalheira, Água Boa, São Félix do Araguaia, Porto Alegre do Norte, Santa Terezinha, and São José do Xingu)		
Linked properties:	5 other properties, unknown area. In São Félix do Xingu (PA): Fazenda Elshaday. In Campinápolis (MT): Fazenda Sonho Meu. In Vila Rica (MT): Fazenda Tigrão, Fazenda Santa Clara. In Santa Terezinha (MT): Fazenda Santa Terezinha		
Supply chain links			
Main Commodities	Beef		
Confirmed supply chain link, level of certainty, and soy trader/ beef processor	Yes	High / Medium	JBS / Marfrig
Companies' reply	The indirect link to Minerva was removed . Minerva declared that " <i>Fazenda TIGRE does not have any commercial relationship with the Company</i> ", regarding the Fazenda Sonho Meu (Pedra Preta - MT), they also declared that " <i>the property is listed in the Company's registration system</i> " but is " <i>currently blocked due to a CAR suspension as of July 2022</i> ".		
Soy	Main exporters (municipality)	[Domestic Consumption (100%)]	
	Warehouses (50 km radius)	3 warehouses owned by individuals and local storage companies/cooperatives	
	Supply chain links & details:	-	
Beef	Main traders (municipality)	Frigol (42%), Marfrig (35%), JBS (9%), others (14%)	
	Slaughterhouses (sourcing from the municipality)	25 different slaughterhouses sourced cattle from São Félix do Xingu (PA) in 2019, e.g.: 4 owned by JBS (Santana do Araguaia, Marabá, Tucumã, Redenção, all in PA), 1 by Marfrig (Tucumã - PA)	
	Supply chain links & details:	Directly supplied cattle to 2 JBS slaughterhouses (Redenção and Santana do Araguaia - PA) in 2019 and 2020 through the linked properties (same ownership), Fazenda Elshaday and Fazenda Sonho Meu, both in São Félix do Xingu (PA). Indirectly supplied 1 JBS slaughterhouse (Santana do Araguaia - PA), between 2018 and 2022 through Fazenda Surpresa owned by Albertine de Paula Souza (Santana do Araguaia - MT), Fazenda Terra Roxa (São Félix do Xingu - PA), and Fazenda Canaã (Santana do Araguaia - MT). Linked properties owned by Bertier da Silva Filho in Santa Terezinha (MT) directly supplied JBS (Confresa - MT) in 2018 and 2019. The linked property, Fazenda Sonho Meu (Caminópolis - MT) owned by Marcia Nubia Moreira da Silva, directly supplied 3 JBS slaughterhouses (Confresa, Barra do Garças and Água Boa - MT), 1 Minerva slaughterhouse (Paranatinga - MT) and 1 Marfrig slaughterhouse (Nova Xavantina - MT) in 2018 and 2019	
Other supply chain links and details:	-		
General comments			
The company Grupo Tigrão, owned by Bertier da Silva Filho and Marcia Nubia Moreira da Silva, is a well established business of gas/fuel station in North Mato Grosso.			
(1) https://grupotigrao.com.br/enderecos/			