

| Property  |  |
|---|--|
| <b>Fazenda Santa Rita</b>                               |  |
| Porto Alegre do Norte, Mato Grosso                      | <b>Amazon biome</b>                                |
| <b>CAR:</b> MT-5106778-6DFD5167DC9C4482BDB2D943BB353A20 | <b>SIGEF/SNCI:</b> 9500174631838                   |
| <b>Area property (ha):</b> 4,059                        | <b>Coordinates property:</b> -10.720433, -52.05133 |

| Cleared Area  |   |
|---|---|
| <b>Coordinates clearance:</b>                             | -10.70779, -52.05369  |
| <b>243</b> hectares                                       | <b>period clearance:</b> Dec 2022 to Jan 2023                 |
| - fires alerts  |   |
| <b>Inside Forest Code's protected areas:</b> Yes          | 14 ha inside declared Legal Reserve                           |
| <b>Type of vegetation:</b> Ombrophilous Forest transition | <b>Priority for Biodiversity Conservation:</b> Extremely high |
| <b>Conservation area(s) (overlapping or bordering):</b>   | -   |
| <b>Indigenous Territories (overlapping or bordering):</b> | -   |

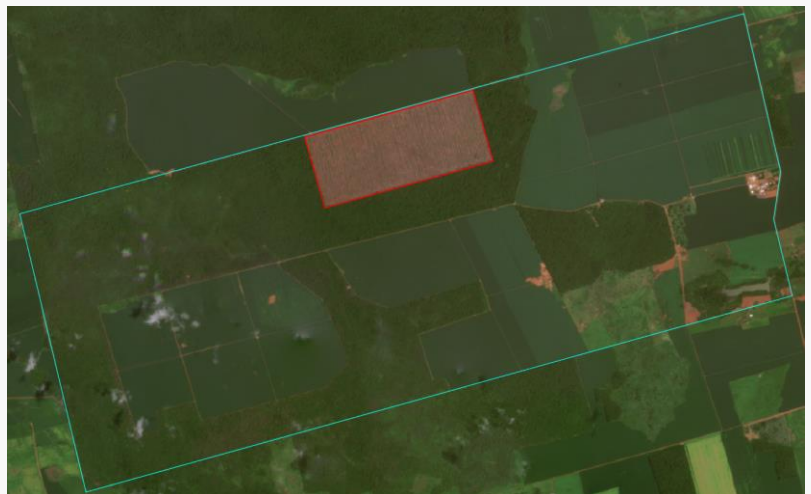
**Imagery:** limits of the property (blue) limits of the cleared area (red)

December 2022



Source: Imagery ©2022 Planet Labs Inc.

January 2023



Source: Imagery ©2023 Planet Labs Inc.

| Environmental fines and embargoes   |  |  |       |
|---|--|--|-------|
| Embargoes:  | No   | -  |       |
| Environmental fines:  | No   | -  | -     |
| Ownership and other linked properties   |  |  |       |
| Ownership:  | Anacleto Brunetta  |  |       |
| Company group:  | 5 linked companies: Santa Rita Agronegócios Ltda and Santa Rita Indústria e Comércio de Cereais Ltda (both in Porto Alegre do Norte - MT); Sr Agro Participações Ltda (Porto Alegre do Norte - MT) and Unicotton Insumos Agropecuários Ltda and Unicotton Pesquisa e Participações Ltda (both in Primavera do Leste - MT)  |  |       |
| Linked properties:  | No linked properties found   |  |       |
| Supply chain links  |  |  |       |
| Main Commodities  | Beef and Soy   |  |       |
| Confirmed supply chain link, level of certainty, and soy trader/ beef processor   | Yes  | High   | Bunge |
| Companies' reply  | <p><b>JBS (potential trading link removed):</b> "Fazenda Santa Rita - has been inactive in our system since 1999".</p> <p><b>Marfrig (potential trading link removed):</b> Fazenda Santa Rita "is blocked to supply Marfrig due to deforestation criteria".</p> <p><b>Amaggi (potential trading link removed):</b> "No commercial relationship was identified between AMAGGI with the mentioned property [Fazenda Santa Rita]".</p> <p><b>ADM (potential trading link removed):</b> "Fazenda Santa Rita (Porto Alegre do Norte-MT) has no links to ADM".</p> |  |       |
| Soy   | Main exporters (municipality)  | Bunge (53%), Cargill (5%), LDC (5%), ADM (4%), others (33%)  |       |
|   | Warehouses (50 km radius)  | 14 warehouses, e.g.: 1 owned by Amaggi, 2 by Cargill, 1 by Bunge, 1 by LDC   |       |
|   | Supply chain links & details:  | -  |       |
| Beef  | Main traders (municipality)  | JBS (77%), Marfrig (13%), Minerva (3%), others (7%)  |       |
|   | Slaughterhouses (sourcing from the municipality)   | 5 slaughterhouses source cattle from Porto Alegre do Norte (MT) in 2021, e.g., 2 owned by JBS (Confresa and Barra dos Garças, both in MT). |       |
|   | Supply chain links & details:  | Directly supplied cattle to 1 JBS slaughterhouse (Confresa - MT) in 2018 and 2019  |       |
| Other supply chain links and details:   | Supplied corn to Bunge in 2018   |  |       |
| General comments  |  |  |       |
| <p><b>***The opened area reported has an environmental license***</b> The property Fazenda Santa Rita has an authorization for clearing 253 hectares of native vegetation issued in June 2022 by the Environmental Agency in Mato Grosso (SEMA - MT) valid until May 2025 (1). Santa Rita Agronegócios is a company directly linked to Fazenda Santa Rita and its main activity is wood extraction from native forests, although other associated activities are cereal farming, soy farming, and cattle raising (2). The companies Santa Rita Agronegócios and Santa Rita Indústria e Comércio are both located in Fazenda Santa Rita and the latter focuses on animal/cattle feed production from corn and soy, as well as soybean oil (3). The CAR declaration covering the area is validated by SEMA (MT) and is declared by Santa Rita Agronegócios (4). The managing partners of most of the linked companies found (as well as of Fazenda Santa Rita) are family members, namely Anacleto's sons (Reginaldo Brunetta and Edinaldo Brunetta), daughter (Andreia Aparecida Brunetta), and son-in-law (Crespin José Silva dos Santos) (5). Fazenda Santa Rita has an authorization to deforestation and forest exploitation of 253 hectares issued by the Environmental Agency of Mato Grosso (SEAM-MT) in June 2022 (6). The linked company has 10 active loans with BNDES (Brazilian Development Bank) in the amount of BRL 10 millions contracted between 2015 and 2021 in Porto Alegre do Norte (MT) (7).</p> |  |  |       |
| <p>(1) <a href="https://geoportal.sema.mt.gov.br/#/">https://geoportal.sema.mt.gov.br/#/</a></p> <p>(2) <a href="https://www.econodata.com.br/consulta-empresa/28436107000104-SANTA-RITA-AGRONEGOCIOS-LTDA">https://www.econodata.com.br/consulta-empresa/28436107000104-SANTA-RITA-AGRONEGOCIOS-LTDA</a></p> <p>(3) <a href="https://fsantarita.com.br/copia-servicos-1">https://fsantarita.com.br/copia-servicos-1</a></p> <p>(4) <a href="https://geoportal.sema.mt.gov.br/#/">https://geoportal.sema.mt.gov.br/#/</a></p> <p>(5) <a href="https://www.consultasocio.com/q/sa/anacleto-brunetta">https://www.consultasocio.com/q/sa/anacleto-brunetta</a> &amp; <a href="https://fsantarita.com.br/nossahistoria">https://fsantarita.com.br/nossahistoria</a></p> <p>(6) <a href="https://geoportal.sema.mt.gov.br/#/">https://geoportal.sema.mt.gov.br/#/</a></p> <p>(7) <a href="https://www.bndes.gov.br/wps/portal/site/home/transparencia/consulta-operacoes-bndes">https://www.bndes.gov.br/wps/portal/site/home/transparencia/consulta-operacoes-bndes</a></p>  |  |  |       |