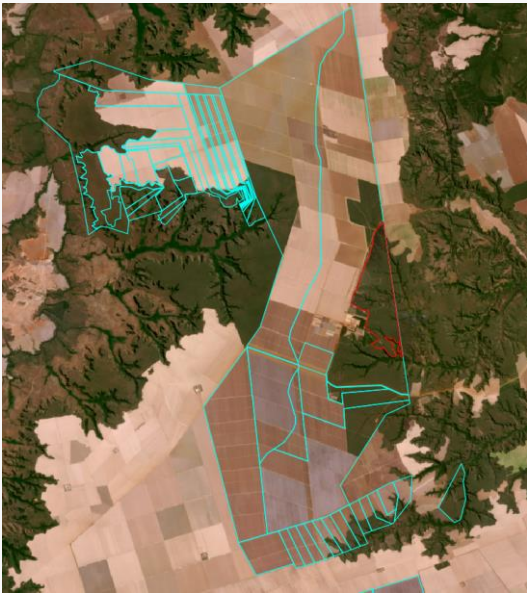


Property			
<b>Fazenda Parnaíba</b>			
Tasso Fragoso, Maranhão		<b>Cerrado biome</b>	
<b>CAR:</b>	MA-2112001- A6BD459DE40F42E9BE82BCFB110AC5D5	<b>SIGEF/SNCI:</b>	1140650065646
<b>Area property (ha):</b>	48,180	<b>Coordinates property:</b>	-8.46321, -46.07877
Cleared Area			
<b>Coordinates clearance:</b>		-8.4931, -46.0618	
<b>1,433</b> hectares		<b>period clearance:</b>	Aug to Sep 2023
<b>71,617</b> tons of CO <sub>2</sub>			
<b>40</b> fires alerts			
<b>Inside Forest Code's protected areas:</b>	Yes	1433 ha inside declared Legal Reserve and APP	
<b>Type of vegetation:</b>	Wooded Savanna	<b>Priority for Biodiversity Conservation:</b>	High
<b>Conservation area(s) (overlapping or bordering):</b>		-	
<b>Indigenous Territories (overlapping or bordering):</b>		-	

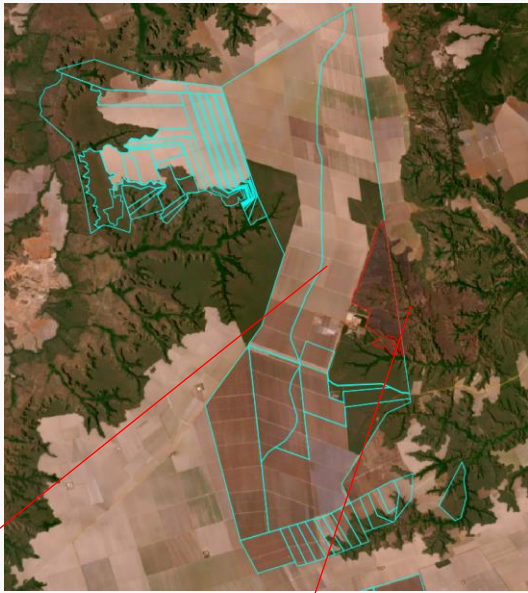
**Imagery:** limits of the property (green), limits of the cleared area (red)

August 2023



Source: Imagery ©2023 Planet Labs Inc.

September 2023

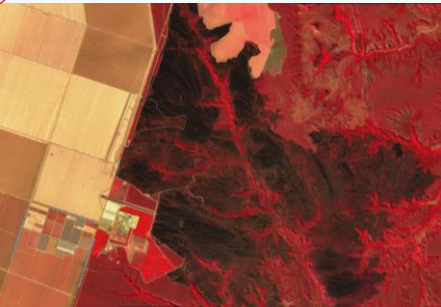


Source: Imagery ©2023 Planet Labs Inc.

Fires  
August  
2023



Source: European Union - EO Browser Copernicus Sentinel data 2023



Processed image.  
Source: European Union - EO Browser Copernicus Sentinel data 2023

Environmental fines and embargoes			
<b>Embargoes:</b>	Yes (other links)	2 environmental embargoes in Fazenda Planeste (Balsas - MA). One in 2011 due to engaging in the drying of grains without the necessary environmental permit while this is a potentially polluting activity, and one in 2008 due to extrapolation of the percentual area allowed by law for producing activities.	
<b>Environmental fines:</b>	Yes (other links)	26 fines, all on SLC agrícola linked properties: 9 fines in multiple years (1996, 2001, 2004, 2007, 2013, and 2018) in a property in Costa Rica (MS); 3 fines in 1998 in a property in Cristalina (GO); 2 fines in different years (2003 and 2007) in a property in Buriti (MA), which name is mentioned only in the 2003 fine (Fazenda Palmeira); 1 fine in 2004 in a property in Buritiana (MA); 3 fines in 2008 and 2011 in a property in Balsas (MA); 3 fines in 2015 and 2022 in a property in Barreiras (BA); 2 fines in 2017 in a property in Jaborandi (BA); 1 fine in 2017 in a property in Correntina (BA); and 1 fine in 2022 in a property in Santa Filomena (PI). Of the 26 fines mentioned, 7 were issued due to illegal native vegetation clearance, in some cases inside the permanent preservation areas of the properties, and 2 were issued due to unauthorized use of fire on vegetation.	BRL 12,586,440
Ownership and other linked properties			
<b>Ownership:</b>	SLC Agrícola		
<b>Company group:</b>	SLC Agrícola		
<b>Linked properties:</b>	22 properties totaling 670,000 ha of planted area (according to the SLC Agrícola website). In Santa Filomena (PI): Fazenda Parnaguá. In Diamantino (MT): Fazenda Paiaguás, Fazenda Piracema. In São Desidério (BA): Fazenda Paladino. In Barreiras (BA): Fazenda Palmares. In Cristalina (GO) and Unaí (MG): Fazenda Pamplona. In Tasso Fragoso (MA): Fazenda Parnaíba, Fazenda Palmeira. In Correntina (BA): Fazenda Panorama, Fazenda Paysandu. In Porto dos Gaúchos (MT): Fazenda perdizes. In Formosa do Rio Preto (BA): Fazenda Parceiro. In Querência (MT): Fazenda Pioneira. In Jaborandi (BA): Fazenda Piratini. In Costa Rica (MT): Fazenda Planalto. In Balsas (MA): Fazenda Planeste. In Sapezal (MT): Fazenda Planorte. In Chapadão do Sul (MT): Fazenda Pantanal. In Campo Novo do Parecis (MT): Fazenda Pampeira. In Santa Rita do Trivelato (MT): Fazenda Pirapora. In Tabaporã (MT), Nova Canaã (MT), and Itaúba (MT): Fazenda Próspera. In Monte Alegre do Piauí (PI): Fazenda Paineira		
Supply chain links			
<b>Main Commodities</b>	Beef and Soy		
<b>Confirmed supply chain link, level of certainty, and soy trader/ beef processor</b>	Yes	High	Bunge, Cargill, LDC, JBS
<b>Companies' reply:</b>	<i>Cargill [potential link maintained]: "3 cases we negotiated with the farm - we have evidence that no misconduct or illegality was conducted. 3 cases we have the farmer registered, but not the farm and no risk of triangulation identified. 2 cases the farm or farmer is already blocked in our system - for sustainability or other reasons. 2 cases have no relationship with our supply chain."</i>		
<b>Soy</b>	<b>Warehouses (50 km radius)</b>	25 warehouses including one from Cargill and one from Bunge	
	<b>Supply chain links &amp; details:</b>	SLC Agrícola has trading links to Bunge, Cargill and LDC confirmed in their FRE V3 report of 2023	
<b>Beef</b>	<b>Slaughterhouses (sourcing from the municipality)</b>	3 different slaughterhouses sourced cattle from Tasso Fragoso (MA) in 2020, none of which was owned by JBS, Marfrig, or Minerva.	
	<b>Supply chain links &amp; details:</b>	Fazenda Parnaíba directly supplied cattle to a JBS slaughterhouse (Araguaína - TO) in 2022. In the same year, it also indirectly supplied the same JBS slaughterhouse through a linked property (also owned by SLC Agrícola), Fazenda Planeste (Balsas - MA). This property, Fazenda Planeste, also directly supplied the JBS slaughterhouse mentioned in 2021.	
<b>Other supply chain links and details:</b>		SLC Agrícola is also active in cotton and maize production	

## General comments

Fazenda Parnaíba was established in the 80s. In 1994, cotton was first planted on the farm as an experiment, and in the 2000s, Fazenda Parnaíba took up the farming of this crop consistently (1) (2). In 2003, the farm exported cotton to the United States for the first time (2). SLC Agrícola is the largest listed soybean producer in Brazil (3). Besides producing soy, cotton, and maize, SLC Agrícola is also dedicated to pasture farming and cattle raising, integrating crop and livestock farming into its operations (4). In 2021, SLC Agrícola incorporated the company Terra Santa Agro, adding about 145 thousand hectares of land in Mato Grosso to its portfolio, which currently counts 22 properties spread throughout 7 Brazilian states - Bahia, Piauí, Mato Grosso, Mato Grosso do Sul, Minas Gerais, Maranhão, and Goiás (5). SLC Agrícola, which is majority owned by SLC Participações, is one of the main investors in rural real estate in Matopiba and is linked to various US and European investors, e.g. British equity investors Odey Asset Management (9.34% share) and Kopernik Global Investors, LLC (5.16% share) (6). SLC Agrícola owns SLC LandCo, a farmland investment joint venture with UK-based Valiance Fund (6) (7). In 2012, SLC Agrícola initiated a joint venture with Valiance Asset Management, founding SLC LandCo, which controls 86,574 ha in the Matopiba region in the Brazilian Cerrado biome. Valiance holds an 18 per cent share, and SLC Agrícola an 82 per cent share of SLC LandCo. The company is widely associated with regional land speculation (7). Through another joint venture with Grupo Roncador, SLC Agrícola owns 20,000 ha in Querência (Mato Grosso). In a joint venture with Mitsui & Co, SLC Agrícola operates 21,898 ha in São Desidério (Bahia) and 16,213 ha in Porto dos Gaúchos (Mato Grosso) (8). According to SLC Agrícola's 2023 Reference Form, the companies' clients include Cargill (representing 30.59% of its revenue in 2022, 14.95% in 2021, and 18.96% in 2020), Bunge (representing 10.42% of its revenue in 2021 and 11.63% in 2020) and LDC (representing 14.82% of its revenue in 2021) (8). These are all companies with zero deforestation commitments (9). In 2014, SLC Agrícola donated BRL100,000 to the election campaign of the Federal Deputy Jerônimo Goergen (PP-RS), one of the coordinators of the Agribusiness Parliamentary Group in the National Congress. In 2018, after private donations were banned, the owners of SLC, Eduardo Silva Logemann and Jorge Luiz Silva Logemann, respectively, President and Vice-President of SLC's Board, donated BRL 25,000 each to Goergen's campaign (10). Goergen is considered one of the main agribusiness leaders, with 29 projects about Laws and regulations against indigenous and traditional communities' rights (11). In 2023, the Dutch investment asset company Robeco excluded SLC Agrícola from their investment portfolio due to connections of the company with environmental violations (12). In November 2022, SLC Agrícola requested the Piauí Environmental Agency (SEMAR - PI) the renewal of the license for clearance of native vegetation in Fazenda Parnaguá, in Santa Filomena (PI) (13). According to documents from 2020, the property Fazenda Paineira is leased by Darsi Fritzen (14), owner of the Fritzen Agro (15) and cattle supplier of JBS (16).

- (1) <https://www.slcaagricola.com.br/nossas-fazendas/fazenda-parnaiba/>
- (2) [https://www.agrolink.com.br/noticias/fazenda-parnaiba-exporta-algodao-para-os-eua\\_9968.html](https://www.agrolink.com.br/noticias/fazenda-parnaiba-exporta-algodao-para-os-eua_9968.html)
- (3) <https://www.slcaagricola.com.br/en>
- (4) <https://www.comprerural.com/com-671-946-hectares-conhecidas-as-fazendas-do-rei-da-soja/>
- (5) <https://varos.com.br/blog/artigo/slc-agricola-acoas>
- (6) <http://ri.slcaagricola.com.br/governanca-corporativa/composicao-acionaria>
- (7) <http://ri.slcaagricola.com.br/publicacoes-e-documentos/apresentacoes-e-teleconferencias>
- (8) <https://api.mziq.com/mzfilemanager/v2/d/a975c39b-3eca-4ad8-9330-2c0a0b8d1060/0f6b80bf-8f2a-ee2c-e041-f0669b538b16?origin=1>
- (9) <https://chainreactionresearch.com/report/slc-agricola-cerrado-deforestation-poses-risks-to-revenue-and-farmland-assets/>
- (10) <http://divulgacandcontas.tse.jus.br/>
- (11) <https://deolhonosruralistas.com.br/2018/03/20/autor-do-pl-que-criminaliza-mst-e-mtst-apresentou-29-projetos-contra-povos-indigenas-e-quilombolas/>
- (12) <https://valor.globo.com/agronegocios/noticia/2023/01/23/gestora-exclui-slc-de-aportes-por-relatos-de-violacao-ambiental.ghtml>
- (13) [http://www.diariooficial.pi.gov.br/diario/202211/TEMP01\\_a5ef89a42d.pdf](http://www.diariooficial.pi.gov.br/diario/202211/TEMP01_a5ef89a42d.pdf)
- (14) [http://www.saude.pi.gov.br/uploads/warning\\_document/file/587/DIARIO02\\_067bdf213a.pdf](http://www.saude.pi.gov.br/uploads/warning_document/file/587/DIARIO02_067bdf213a.pdf)
- (15) <https://www.moneytimes.com.br/todo-os-homens-do-agro-do-presidente-os-7-maiores-doadores-dos-r-12-mi-aos-r-500-mil/>
- (16) <https://www.girodobo.com.br/giro-pelo-brasil/pecuarista-viaja-mais-de-12-mil-km-para-abater-seu-gado-e-sai-no-lucro/>