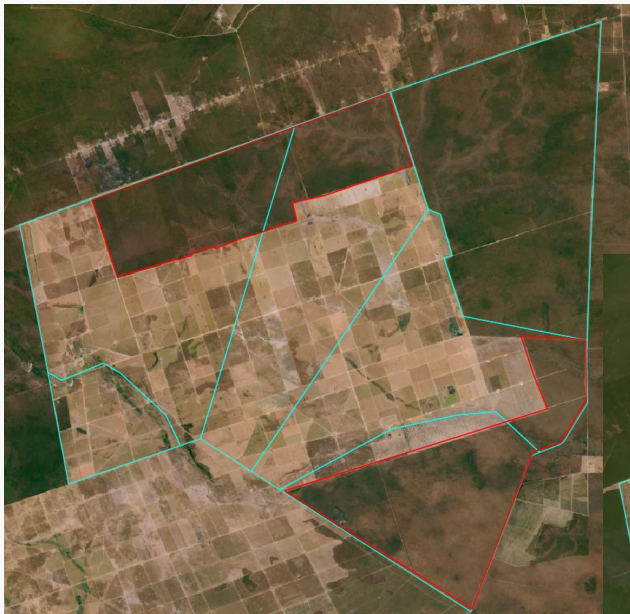


Property			
<b>Fazenda Novale</b>			
Santa Rita de Cássia, Bahia		<b>Cerrado biome</b>	
<b>CAR:</b>	BA-2928406-064097630D68448482CD0BCEE3A22377, BA-2928406-E5E5F277060A45FBB530DD82C9ED6280, BA-2928406-7BCEFD1895664911BCF4D2591096C3A2, BA-2928406-B6C58F55A5934880B4D6AC6645DC0A4D	<b>SIGEF/ SNCI:</b>	3011080077907
<b>Area property (ha):</b>	21,18 8	<b>Coordinates property:</b>	-11.38593, -44.72559

Cleared Area			
<b>Coordinates clearance:</b>		-11.42387, -44.72068	
<b>5,379</b> hectares	<b>period clearance:</b>	Sep 2022 to May 2023	
<b>691,488</b> tons of CO <sub>2</sub>			
<b>163</b> fires alerts			
<b>Inside Forest Code's protected areas:</b>	No	-	-
<b>Type of vegetation:</b>	Forested Savanna	<b>Priority for Biodiversity Conservation:</b>	Very high
<b>Conservation area(s) (overlapping or bordering):</b>		-	
<b>Indigenous Territories (overlapping or bordering):</b>		-	

**Imagery:** limits of the property (blue), limits of the cleared area (red)

September 2022



Source: Imagery ©2022 Planet Labs Inc.

May 2023



Source: Imagery ©2023 Planet Labs Inc.

Environmental fines and embargoes			
<b>Embargoes:</b>	Yes	1 temporary environmental embargo, in a property in Formosa do Rio Preto, due to diverting a river course and building a water cooptation system in the permanent preservation area (APP) of the property.	
<b>Environmental fines:</b>	No	-	-
Ownership and other linked properties			
<b>Ownership:</b>	Adil Arlindo Manjabosco		
<b>Company group:</b>	3 linked companies: Imbuia Agropecuária (Luis Eduardo Magalhães - BA) and Agropecuária Mariana Manjabosco (Riachão das Neves - BA and Santo Antônio Das Missões - RS), both active in soy farming, and Alvorada Sistemas Agrícolas (Santa Rosa - RS).		
<b>Linked properties:</b>	5 linked properties, with a total of more than 16,461 ha. In Riachão das Neves (BA): Fazenda Santa Maria (3,335 ha), Fazenda Santa Maria II (1,830 ha) and Fazenda Santa Marta (1,246 ha). In Formosa do Rio Preto (BA): Fazenda Triunfo (10,050 ha). In Santo Antônio das Missões (RS): Fazenda Liberdade (unknown area).		
Supply chain links			
<b>Main Commodities</b>	Beef and Soy		
<b>Confirmed supply chain link, level of certainty, and soy trader/ beef processor</b>	Yes	Low / Medium	Bunge / JBS
<b>Companies' reply</b>	Cargill (potential trading link removed): "Out of the 8 cases mentioned in the report, we have had no negotiation with the farms mentioned. Analyzing negotiations with farmers and their commercial groups, we have had negotiation we 3 of them, in a different farm."		
<b>Soy</b>	<b>Warehouses</b> (50 km radius)	9 warehouses owned by individuals and local storage companies/cooperatives	
	<b>Supply chain links &amp; details:</b>	-	
<b>Beef</b>	<b>Slaughterhouses</b> (sourcing from the municipality)	13 different slaughterhouses sourced from cattle from Santa Rita de Cássia (BA) in 2020. None of them were owned by JBS, Marfrig or Minerva.	
	<b>Supply chain links &amp; details:</b>	There is a mutual exchange with a linked property (Fazenda Triunfo). The only slaughterhouses directly supplied by Fazenda Novale and other linked properties are municipal slaughterhouses.	
<b>Other supply chain links and details:</b>		Fazenda Triunfo, a linked property, supplied corn to Asa indústria e Comércio (PE) in 2014	

## General comments

Adil Arlindo Manjabosco died in 2016, leaving his children in charge of the Manjabosco family agribusiness investments in Bahia and Rio Grande do Sul, including farming, cattle raising, and wholesale of machinery and equipment for agricultural use (1, 2, 3). Fazenda Novale (Santa Rita de Cássia, Bahia) and Fazenda Triunfo (Formosa do Rio Preto, Bahia) are part of the owner's family business integrating cattle and soy production in Western Bahia (4). Fazenda Novale was already part of RDM report 1, being at the centre of case study 6 with 552 ha cleared between May 2021 and January 2022 (5). Carolina Manjabosco Turra, Eduardo Antônio Manjabosco, Karina Manjabosco de Freitas and Marco Antônio Manjabosco are all partners in Agropecuária Mariana Manjabosco, Agropecuária Adil Manjabosco, and Alvorada Sistemas Agrícolas (6, 7). Eduardo Antônio Manjabosco is a partner in the Cooperativa dos Produtores Rurais da Bahia (Cooperfarms), present also in Goiás and Tocantins states (8). The Manjabosco family also owns a Alvorada Sistemas Agrícolas company that officially represents the John Deere brand in Rio Grande do Sul (9). In 2009, a temporary embargo was imposed on the Manjabosco's property in Formosa do Rio Preto (BA) by Bahia's Environment Secretary due to building a water cooptation system in the permanent preservation area (APP) of the property and diverting the nearby river course (10). Two of the linked companies - Agropecuária A. Manjabosco and Agropecuária Mariana Manjabosco - were part of a corruption operation led by the Federal Police (Avati) concerning tax fraud, money laundering, and criminal association, which involved eight well-established agribusiness companies (most of which located in the West of Bahia) and the issuing of false invoices by shell companies with the purpose of concealing the exit of produced goods to other states (11). Agropecuária Manjabosco has an authorization issued by Inema in 2021 allowing the deforestation of 7,057 hectares at Fazendas Novale II, III, IV and V to implement agricultural activities, valid until September 2023 (12).

(1) <https://www.landinnovation.fund/pt/noticias/triunfo-verde>

(2) <http://maisfm.net/pgcontent?id=10391>

(3) <https://lfpec.com.br/2021/05/09/boi-safrinha-onde-nao-tinha-boi-colhemos-menos-soja-afirma-eduardo-manjabosco/>

(4) <https://www.embrapa.br/en/busca-de-noticias/-/noticia/3689788/produtores-discutem-resultados-de-suas-experiencias-com-ilp-e-ilpf>

(5) [https://aidenvironment.org/wp-content/uploads/2022/02/RDM\\_Report\\_Feb2022\\_UPDATED\\_July22.pdf](https://aidenvironment.org/wp-content/uploads/2022/02/RDM_Report_Feb2022_UPDATED_July22.pdf)

(6) <http://cnpj.info/Agropecuaria-Mariana-Manjabosco-Ltda>

(7) <http://cnpj.info/Agropecuaria-A-Manjabosco-Ltda>

(8) <https://www.consultasocio.com/q/sa/eduardo-antonio-manjabosco>

(9) [http://www.alvorada-rs.com.br/content/about\\_us](http://www.alvorada-rs.com.br/content/about_us)

(10) <https://www.yumpu.com/pt/document/view/37953653/download-sema-secretaria-do-meio-ambiente>

(11) <https://www.correio24horas.com.br/bahia/empresas-ligadas-ao-agronegocio-sao-suspeitas-de-sonegar-r-20-milhoes-na-bahia-091>

(12) INEMA - Instituto de Meio Ambiente e Recursos Hídricos da Bahia