

Property

Fazenda Porteira Branca

Juara, Mato Grosso

Amazon biome

CAR: MT-5105101-7EDC1EF1A3634D4283E2296EE690FD9E

SIGEF/SNCI: 9500331287674

Area property (ha): 2,916

Coordinates property: -57.68983, -10.62050

Cleared Area

Coordinates clearance: -57.69838, -10.62732

1,879 Hectares

61 fires alerts

period clearance: Aug to Sep 2022

Inside Forest Code's protected areas: Yes

1109 ha inside declared Legal Reserve

Type of vegetation: Ombrophilous Dense Forest

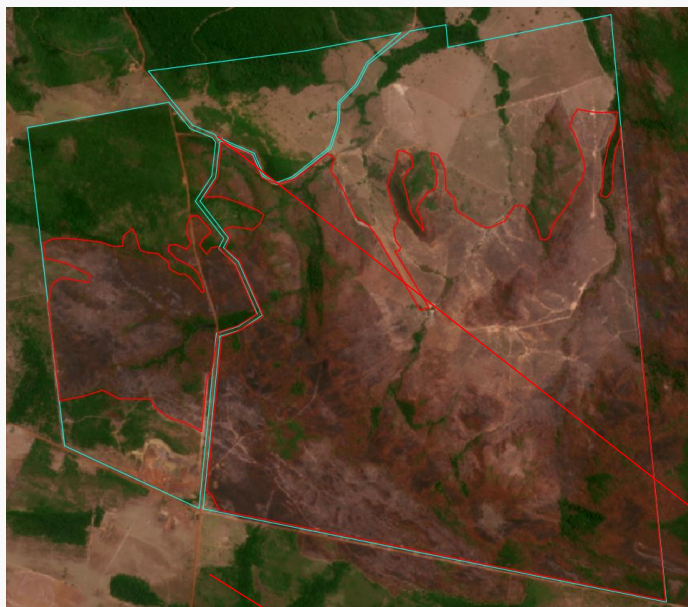
Priority for Biodiversity Conservation: Extremely high

Conservation area(s) (overlapping or bordering): -

Indigenous Territories (overlapping or bordering): -

Imagery: limits of the property (blue) limits of the cleared area (red)

September 2022



Source: Imagery ©2022 Planet Labs Inc.

Fires

25th August 2022



Source: European Union - EO Browser Copernicus Sentinel data 2022

Environmental fines and embargoes			
Embargoes:	Yes (other links)	7 embargoes in the linked property Fazenda Santa Bárbara (Nobres - MT): 2 for illegal clearance of 208 ha of native vegetation in 2017; 5 for illegal clearance of 202 ha of native vegetation in 2017	
Environmental fines:	Yes (other links)	1 environmental fine for illegal clearance of native vegetation in Fazenda Santa Bárbara (Nobres - MT) in 2017	unknown
Ownership and other linked properties			
Ownership:	Humberto Simioni Junior		
Company group:	Agropecuária Saba (Nobres - MT), Açucareira São Geraldo (Sertãozinho - SP)		
Linked properties:	2 other properties, totaling 14,240 ha. In Juara (MT): Fazenda Cachoeira Branca I and II (2,356 ha). In Nobres (MT): Fazenda Santa Bárbara (11,890 ha)		
Supply chain links			
Main Commodities		Beef	
Confirmed supply chain link, level of certainty, and soy trader/ beef processor		Yes	High / Medium
Soy	Main exporters (municipality)	[Domestic Consumption (100%)]	
	Warehouses (50 km radius)	No warehouses within 50km radius from the property	
	Supply chain links & details:	A linked property, Fazenda Santa Bárbara (Nobres - MT), supplied soy to Amaggi in 2019	
Beef	Main traders (municipality)	JBS (56%), Marfrig (24%), Minerva (7%), others (23%)	
	Slaughterhouses (sourcing from the municipality)	15 different slaughterhouses sourced cattle from Juara (MT) in 2019 e.g.: 3 owned by JBS (Juara, Juína, Diamantino, all in MT), 1 owned by Marfrig (Tangará da Serra - MT), 1 owned by Minerva (Várzea Grande - MT)	
	Supply chain links & details:	Directly supplied cattle to 2 JBS slaughterhouses (Juína and Juara - MT) in 2018 and 2019. Indirectly supplied Marfrig (Tangará da Serra - MT) through Fazenda Gera (Campo Novo do Parecis - MT) and JBS (Juara - MT) through Fazenda Esperança (Juara - MT), both in 2018 and 2019. A linked property, Santa Bárbara (Nobres - MT), directly supplied JBS (Diamantino - MT) in 2018 and 2019	
Other supply chain links and details:		-	
General comments			
<p>The owner, Humberto Simioni Junior, received a fine of BRL 18 millions from Mato Grosso environmental state agency (SEMA - MT) for illegal clearance of 3,196 ha of native vegetation inside the conservation Unity APA Cabeceiras do Rio Cuiabá in 2003 (1). Simioni Junior had an authorization issued by SEMA - MT for the clearance of 362 ha in the linked property, Fazenda Cachoeira Branca I and II (Juara - MT) in 2003 (2). The family origins is Sertãozinho (SP), where they are active in cattle production (3).</p>			
<p>(1) https://uc.socioambiental.org/noticia/1000 (2) http://transparencia.sema.mt.gov.br/#/transparencia/sistemas/simlam (3) https://www.solutudo.com.br/empresas/sp/sertaozinho/reproducao-animais/humberto-simioni-junior-17337771</p>			